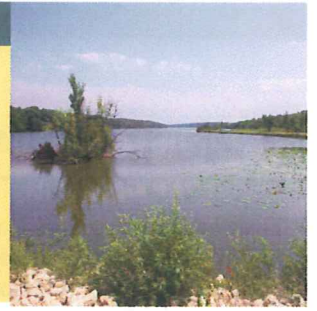




# South Washington Watershed District Newsletter

July 2009

Vol. 2 Issue 1



## 2009 Watershed Projects and Program Updates

Each year the District is required to publish an Annual Report of its projects and programs. Below is a brief summary of each Management Area of the District. The entire Annual Report can be viewed on our website at [www.swwdmn.org](http://www.swwdmn.org).

### Floodplain Management

- SWWD is partnering with the City of Woodbury with a grant program to flood proof properties around Wilmes Lake.

### Stormwater Run Off Rate and Volume

- The SWWD has established standards for development to control stormwater runoff. These standards have been incorporated into local surface water management plans prepared by the Cities.
- The SWWD will work with the City of Woodbury to develop a watershed plan amendment for the construction of the gravel pit storage area. This project is tributary to Bailey Lake and provides significant storage capacity.
- The SWWD will work with the City of Cottage Grove in the construction of local water quality projects.

### Water Quality

- The 2009 BMP Water Quality Cost Share Grant Program.

### Natural Resources and Recreation

- The SWWD participated with the City of Cottage Grove during the completion of the East Ravine AUAR and master plan for the comprehensive plan update. The City is planning for significant greenway/open space and part of the land use plan.
- In 2009, SWWD will continue to return areas of open space from agricultural land use to a native prairie.

### Groundwater

- The SWWD will investigate the potential for expanding the monitoring network surrounding regional infiltration basins. The goal of this project will be to establish baseline water quality.

### Erosion and Sediment Control

- In 2009, SWWD will continue to perform site inspections in tandem with development reviews to increase compliance and to address those that are not in compliance. In addition to site inspections, the NPDES Compliance Study started in 2006 will continue for 2009. Site inspections will occur four times throughout the construction season.

### Education

- SWWD will continue to fund a portion of the Washington Conservation District's Water Resources Educational Specialist in 2009-2012.

### Long Range Work Plan

- Stormwater utility fees as defined and administered by SWWD will continue in 2009. The annual fee is calculated based on the overall project budget. It is anticipated that in 2010 that the East Mississippi Subwatershed will be included in the Stormwater Utility collection. Funds collected in East Mississippi will be used to fund projects only within the East Mississippi subwatershed.
- Washington County has petitioned to expand the SWWD boundary to include a portion of the Lower St. Croix watershed management organization.

### Data Management

- The water monitoring program will continue for 2009.
- The SWWD website will be a key component in relating information to the public in an easy to use platform.
- Development reviews will become a more focused area of expertise for SWWD as the updated WMP becomes fully integrated into both the District and the Cities.

### SWWD CAC Committee

The Citizens Advisory Committee (CAC) consists of local citizens within the District representing a variety of interests. The goal is to create a connection with dedicated, concerned citizens, as well as, planning commission members to further the relationship between land use and water resources.

#### 2009-2010 CAC Members

Dan Bower, Woodbury

Steve Muyskens, Newport

Robert Norby, Woodbury

Stanley Peskar, Woodbury

Amy Schmidt, Woodbury

Christie Thompson, Cottage Grove



If you are interested in joining the CAC, or would like more information, visit the SWWD website [http://www.swwdmn.org/cac\\_committee.htm](http://www.swwdmn.org/cac_committee.htm)

# 2009 BMP Water Quality Cost Share Program



The South Washington Watershed District (SWWD) has grants available for residents and businesses wishing to improve surface water quality within the SWWD boundary.

The SWWD will accept applications year round until funds are depleted for the calendar year. Funding is up to 50% match of eligible expenses with maximum grant amounts of \$2,500 per single family residence project, \$5,000 per neighborhood project, and \$20,000 per commercial/industrial or municipal project.

The SWWD may fund all or a portion of, the requested cost share amount. Projects that are completed or in progress prior to application are not eligible for funding. Partial list of eligible projects are below:

- Rain gardens
- Shoreline restoration
- Rain barrels
- Porous pavers
- Porous concrete and asphalt



The SWWD cost share grants are available on a first come, first serve basis until the funds are depleted for the year. If interested in applying, please complete the enclosed application and mail it to the address below. Applications are also available on our website at [www.swwdmn.org](http://www.swwdmn.org).



For additional project information, please visit [www.BlueThumb.org](http://www.BlueThumb.org) to find garden plans, plant information and local nurseries and landscapers.

## Rain Barrel Information

A rain barrel is a system that collects and stores rainwater from your roof that would otherwise be lost to runoff and diverted to storm drains and streams.

Some Advantages:

- Lawn and garden watering make up nearly 40% of total household water use during the summer. A rain barrel collects water and stores it for when you need it most -- during periods of drought.
- A rain barrel will save most homeowners about 1,300 gallons of water during the peak summer months.

-Diverting water from storm drains also decreases the impact of runoff to streams and lakes.

Where can I purchase a rain barrel?

-Check with your local City. Many of them offer rain barrels at a discounted price

-Many local garden centers and nurseries. Check the Blue Thumb website.

\*Remember rain barrels are included as an eligible cost share expense. Contact the SWWD offices for more information (651) 714-3715.

*Source: This rain barrel information was obtained and edited from the Maryland Green Building Program website.*

## 2008 Water Monitoring Program

Monitoring activities are performed each year within the Watershed. Many of the lakes are monitored by volunteers as part of the Metropolitan Council program. The Washington Conservation District performs additional data collection on rainfall, watershed flows, lake levels and groundwater. This data collection is essential to understand trends in water quality and how to better manage flooding in the watershed. In 2008 there were 15 stream monitoring and 11 lake monitoring sites. The overall report shows an increase in pollutants such as chloride, phosphorus, E. Coli., and heavy metals flowing into the lakes. The following table illustrates the grades received for each lake for water quality:

Lake	Lake Grade					
	2008	2007	2006	2005	2004	2003
Armstrong Lake	C+	D+	C-	C+	C+	C-
Colby Lake	F+	F+	F	D-	D-	F+
Cottage Grove Regional Park Lake	C	C+	C-	D+	NA	NA
Powers Lake	B	C	C	D	C	C

As recommended in the report, the SWWD will look into: Reducing E.Coli to Colby Lake, implement BMP's to reduce the amount of phosphorus and heavy metals in the lakes, look for ways to reduce chloride run-off, and work with local cities to prepare for upcoming TMDL's.



## Administrator's Corner

By Matt Moore, SWWD Administrator

Water quality continues to be a focal point of work performed by the SWWD. Human impacts to our water resources over many years changed the quality of the water. Excess nutrients, sediment, and heavy metals are among the pollutants we typically detect in our water quality samples. In an attempt to reduce the amount of pollutants reaching the surface waters, the SWWD established standards to improve water quality and control these pollutants. As the SWWD continues to implement its watershed plan, a key element will be working with Cities in the watershed to improve water quality. The SWWD and Cities will annually coordinate capital improvement projects. The goal is to take advantage of local projects, enhance them to provide improved water quality and be as efficient as possible.



We're on the Web!  
<http://www.swwdmn.org>