

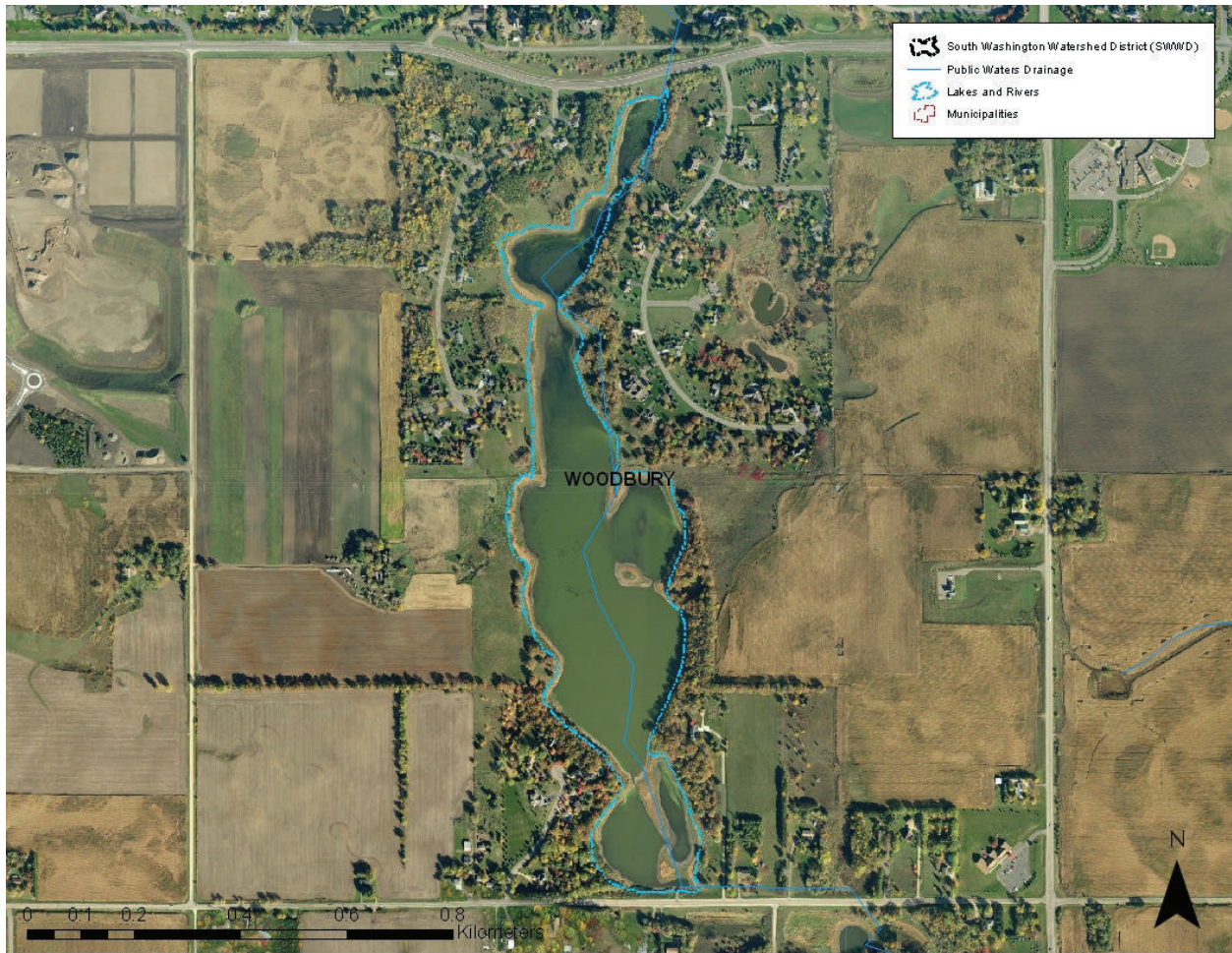
## Bailey Lake

---

DNR ID #82-0097	Municipality: Woodbury
Surface Area: 61 Acres	Watershed Area:
Mean Depth:	Maximum Depth:
SWWD Maximum Allowable Phosphorus Load: maintain existing	
SWWD Trophic State Index (TSI) Goal:	

---

Map 13: Bailey Lake



Bailey Lake (Map 13) is transitioning from wetland to lake and is an integral part of the drainage network in the District. Water quality data is not currently collected at Bailey Lake through the CAMP program; however, water level has been monitored since 1999 and periodic water quality samples were collected at Bailey Lake in 2010 as part of a collaborative effort between SWWD and MDH to assess impacts of infiltration on groundwater. Results from those efforts are presented in the Groundwater section. Historical surface elevation is shown in Figure 17. Historically, the elevation is low and many parts are dry except during wet periods when runoff from the Northern subwatershed collects in the

basin. The lake itself is a product of development in the Northern subwatershed. Much of the existing basin was historically farmland.

Figure 17: Bailey Lake Surface Elevation; 1999-2010

