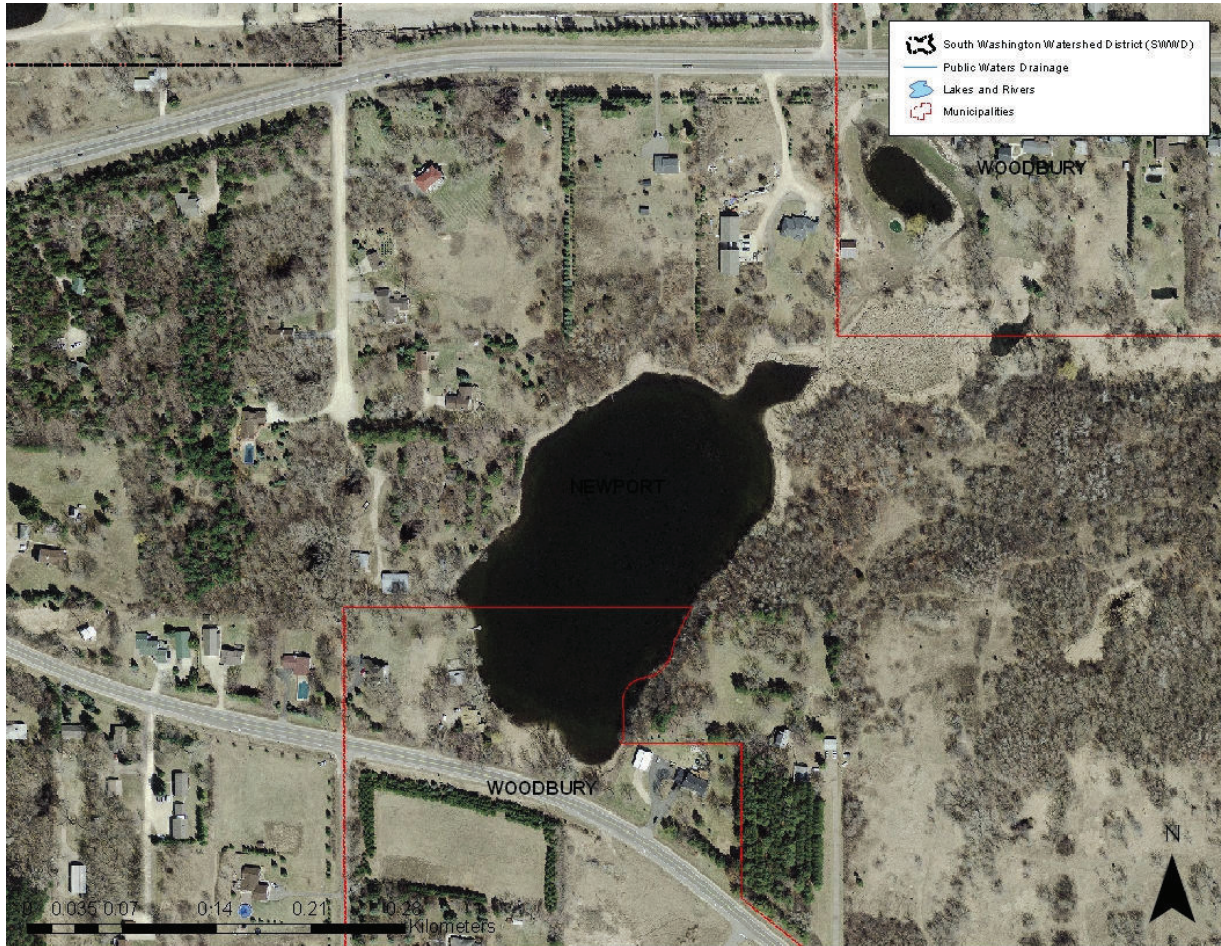


Ria Lake

DNR ID #82-0098 Municipality: Woodbury/Newport
Surface Area: 11 Acres Watershed Area:
Mean Depth: Maximum Depth:
SWWD Maximum Allowable Phosphorus Load: maintain existing
SWWD Trophic State Index (TSI) Goal:

Map 18: Ria Lake



Ria Lake was formerly part of the Ramsey Washington Metro Watershed District. SWWD has done little work with the lake; however, water level has been consistently monitored since 2004. Historical surface elevation is shown in Figure 34. The surface elevation has remained relatively steady (only seasonal fluctuations) with the exception of the 2008-2009 dry years. Water level began to recover, however, in 2010.

Figure 34: Ria Lake Surface Elevation; 2004-2010

