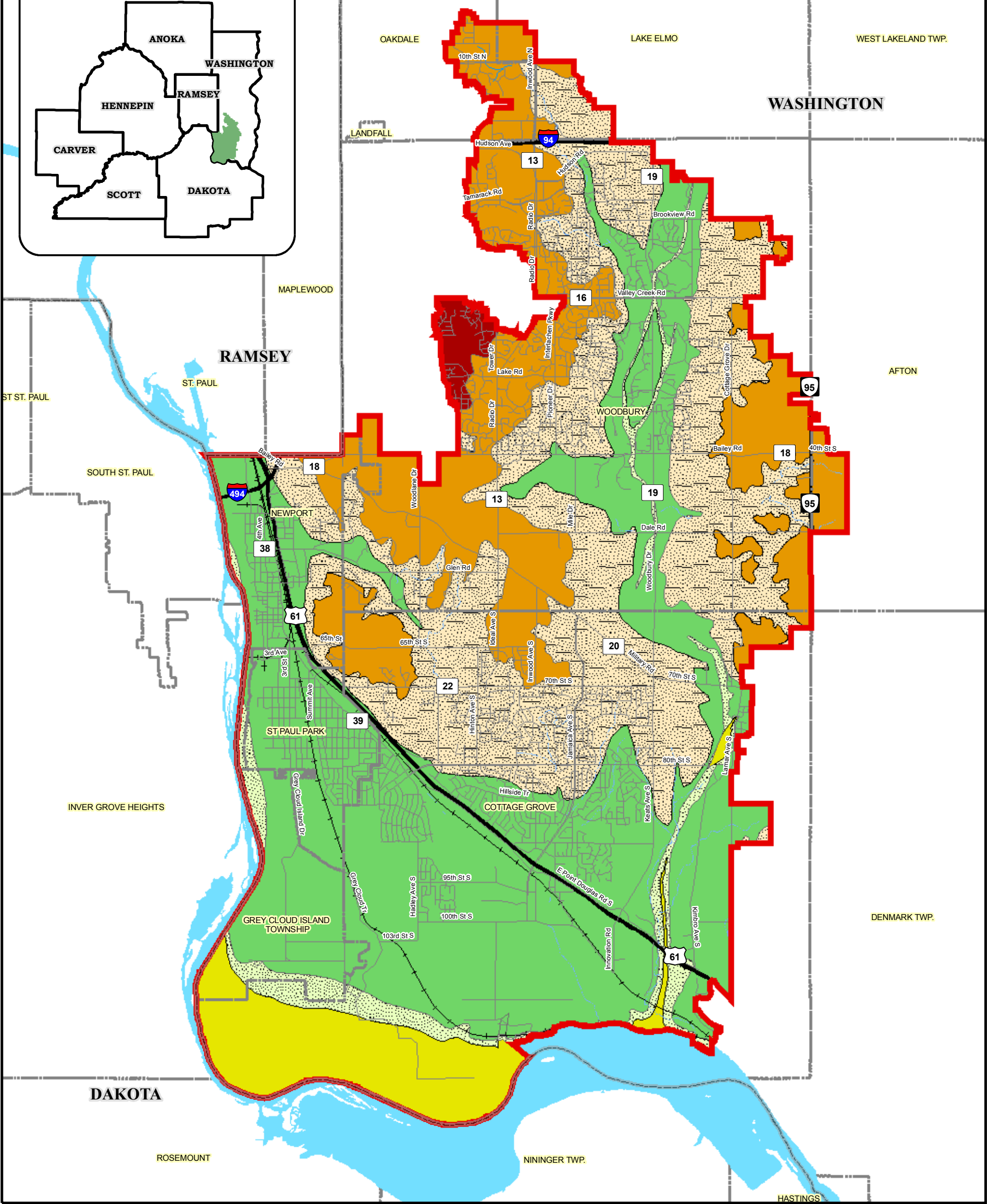
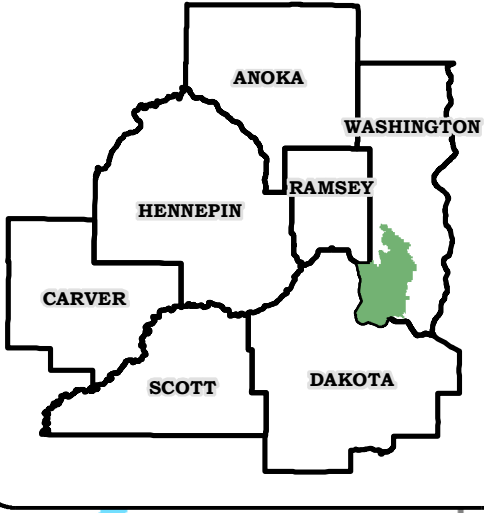


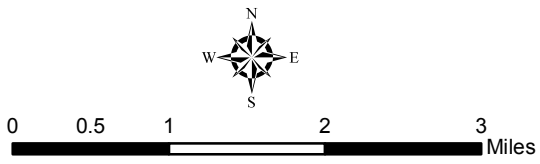
SWWD Location Map



- SWWD Political Boundary
- County Boundary
- Cities & Townships
- Road (MN DOT)
- Major Road
- Local Road
- Railroad
- Stream (Intermittent)
- Drainage Ditch

- Bedrock Geology**
- Decorah Shale
 - Jordan Sandstone
 - Platteville and Glenwood Formations
 - Prairie du Chien Group
 - St. Lawrence Formation-Franconia Formation
 - St. Peter Sandstone

South Washington Watershed District (SWWD) Plan Update



Data Sources: Washington Conservation District, Metro GIS, MN DNR Data Deli
 Bedrock Geology data generated by the MN Geological Society.

Bedrock Geology					
Scale: AS SHOWN	Drawn by: CLS	Checked by:	Project No.: 4876-000	Date: 10/05/05	Sheet:
Houston Engineering, Inc. Leave Nothing to Chance™ 10900 73rd Avenue North, Suite 106 Maple Grove, MN 55369-5400 Bus: (763) 493-4522 Fax: (763) 493-5572 www.houstonengineeringinc.com					