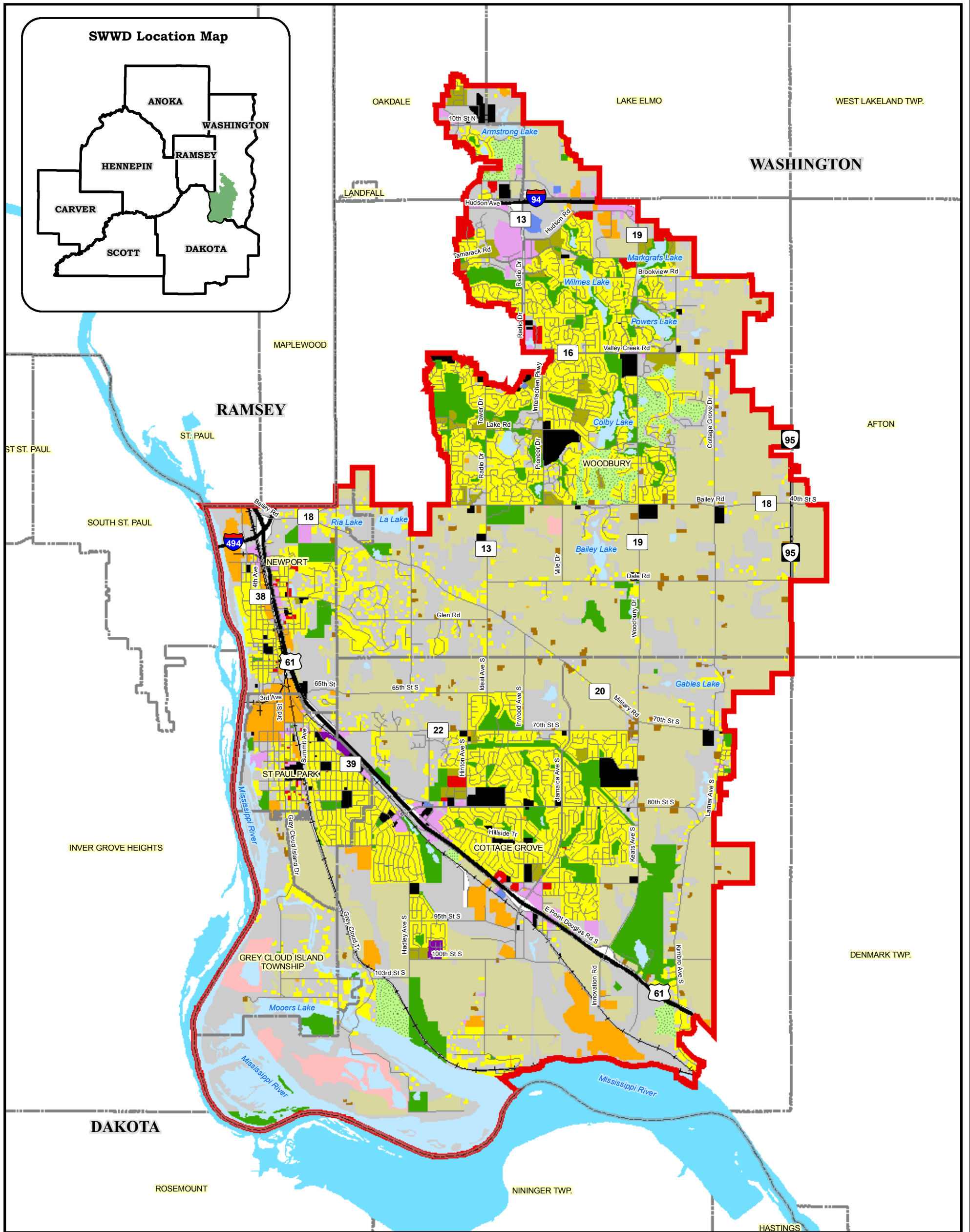
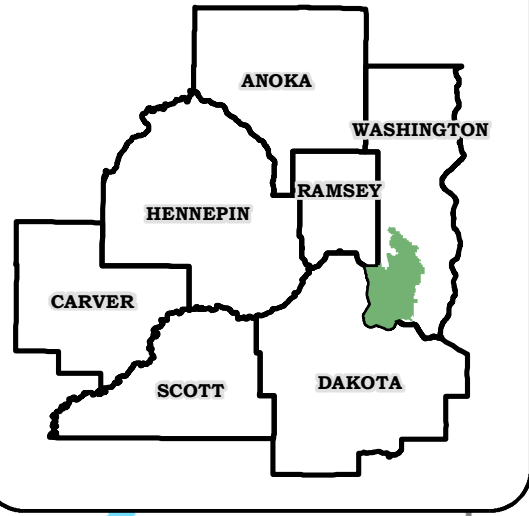


**SWWD Location Map**

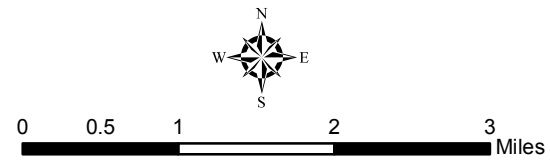


- SWWD Political Boundary
- County Boundary
- Cities & Townships
- Road (MN DOT)**
- Major Road
- Local Road
- Railroad
- Water Features (MN DNR)**
- Waterbody
- Island
- Stream (Intermittent)
- Drainage Ditch

- Land Use Type**
- Extractive
- Agricultural
- Farmstead
- Single Family Detached
- Single Family Attached
- Manufactured Housing Parks
- Mixed Use Residential
- Multifamily
- Seasonal/Vacation

- Industrial & Utility
- Mixed Use Commercial & Other
- Office
- Institutional
- Retail & Other Commercial
- Major Highway or Railway
- Park, Recreational, or Preserve
- Golf Course
- Water
- Undeveloped

**South Washington Watershed District (SWWD) Plan Update**



**2000 Generalized Land Use**

Scale: AS SHOWN	Drawn by: CLS	Checked by:	Project No.: 4876-000	Date: 10/27/05	Sheet:
-----------------	---------------	-------------	-----------------------	----------------	--------

**Houston Engineering, Inc.**  
 Leave Nothing to Chance™  
 10900 73rd Avenue North, Suite 106  
 Maple Grove, MN 55369-5400  
 Bus: (763) 493-4522 Fax: (763) 493-5572  
[www.houstonengineeringinc.com](http://www.houstonengineeringinc.com)

Data Sources: Washington Conservation District, Metro GIS, MN DNR Data Deli 2000 Generalized Land Use data generated by the Metropolitan Council. The data were interpreted from 2000 air photos, with additional assistance from county parcel data and assessor's information.