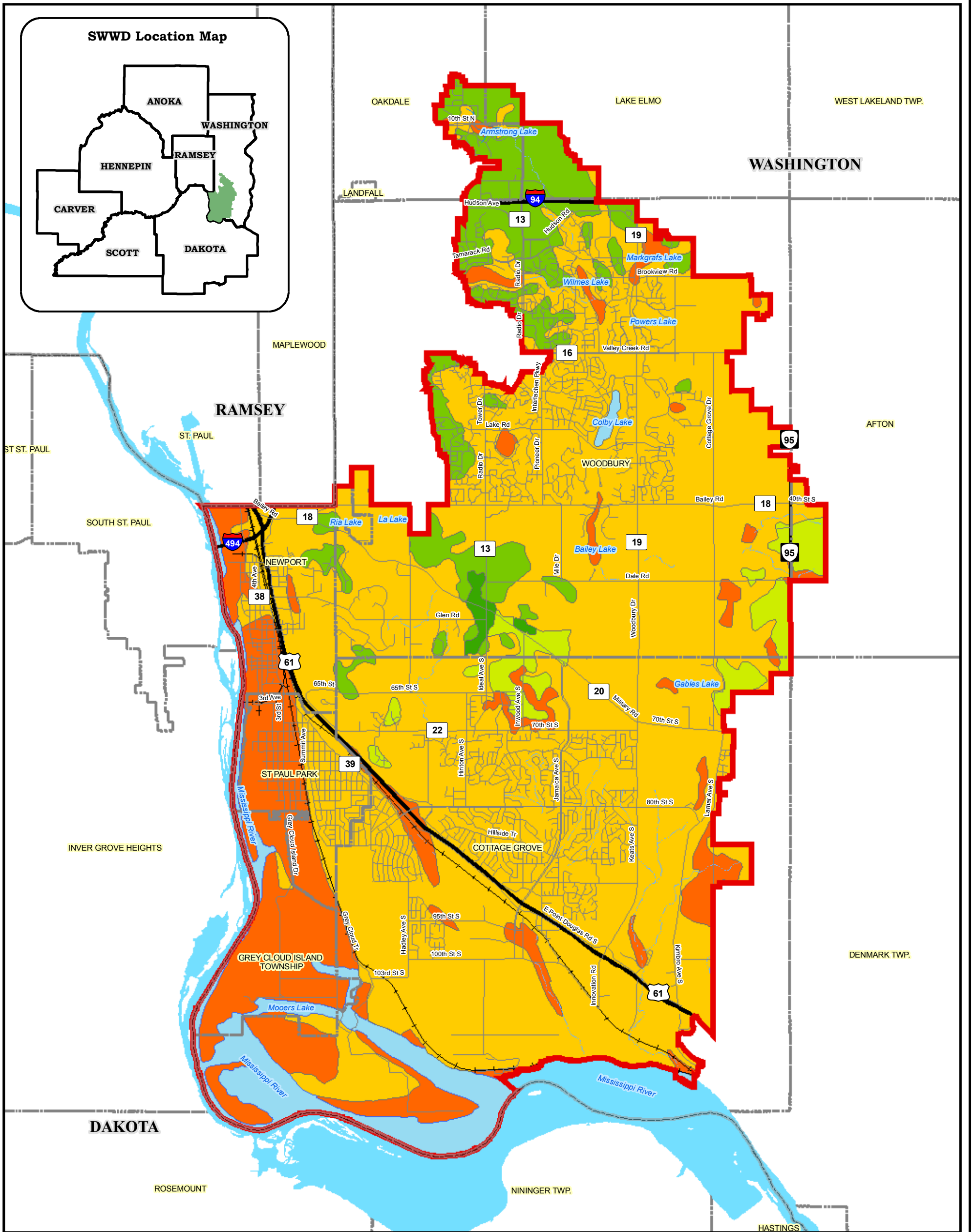
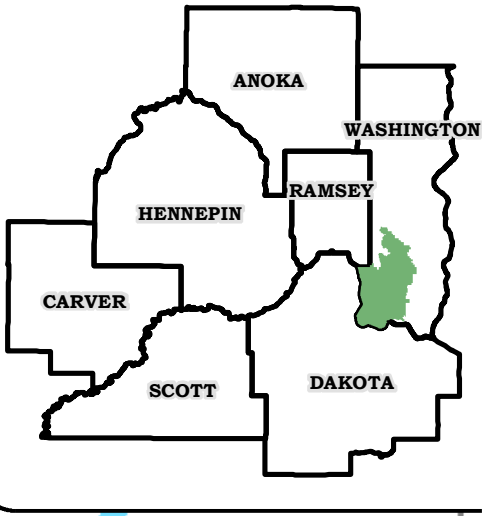


SWWD Location Map

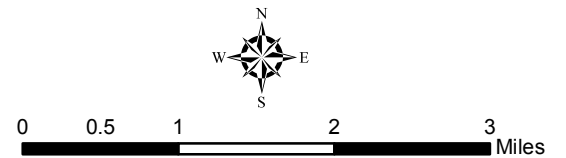


- SWWD Political Boundary
- County Boundary
- Cities & Townships
- Road (MN DOT)**
- Major Road
- Local Road
- Railroad

- Water Features (MN DNR)**
- Waterbody
- Island
- Stream (Intermittent)
- Drainage Ditch

- Sensitivity to Ground Water Contamination**
- Low
- Moderate
- High-Moderate
- High
- Very High
- Water

**South Washington Watershed District (SWWD)
Plan Update**



Sensitivity to Ground Water Contamination					
Scale: AS SHOWN	Drawn by: CLS	Checked by:	Project No.: 4876-000	Date: 10/05/05	Sheet:

Houston Engineering, Inc.
 Leave Nothing to Chance™
 10900 73rd Avenue North, Suite 106
 Maple Grove, MN 55369-5400
 Bus: (763) 493-4522 Fax: (763) 493-5572
www.houstonengineeringinc.com

Data Sources: Washington Conservation District, Washington Co. Information Services, Metro GIS, MN DNR Data Deli
 Sensitivity to Groundwater Contamination based on Water Table Sensitivity to Pollution dataset generated by Washington Co. Information Services.