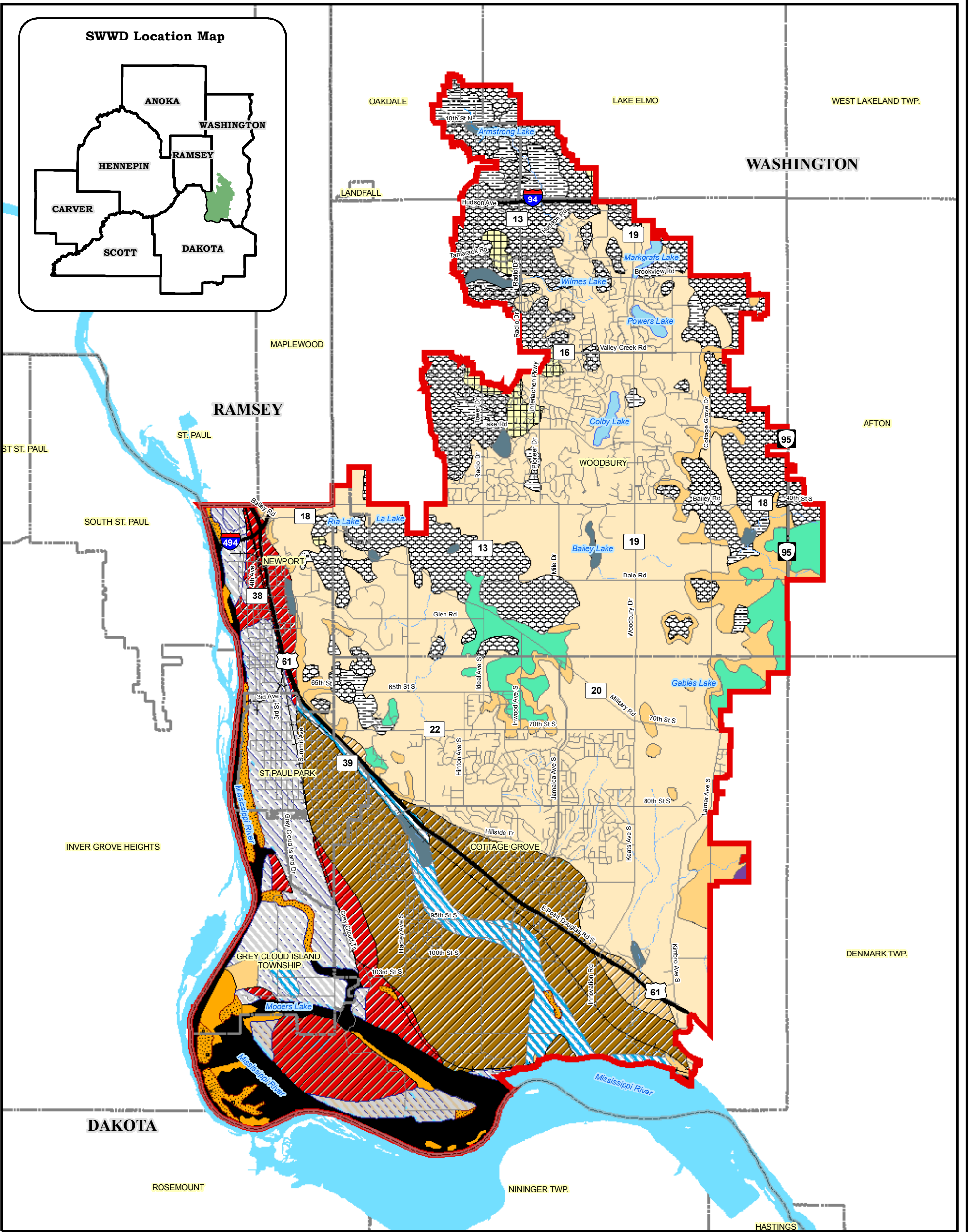
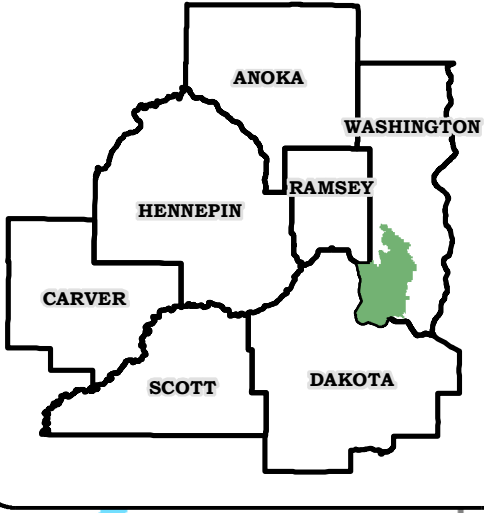


SWWD Location Map

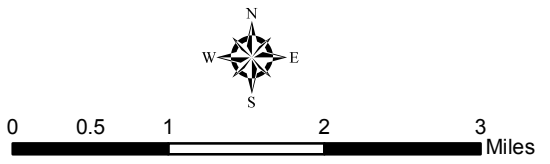


- SWWD Political Boundary
- County Boundary
- Cities & Townships
- Road (MN DOT)**
- Major Road
- Local Road
- Railroad
- Water Features (MN DNR)**
- Waterbody
- Island
- Stream (Intermittent)
- Drainage Ditch

- Surficial Geology**
- Bedrock Near Surface
 - Floodplain Alluvium (loamy)
 - Floodplain Alluvium (sandy)
 - Glacial Till, Sand and Gravel
 - Ice Contact Deposit (Superior)
 - Lacustrine Sand and Silt (Superior)
 - Lower Terraces
 - Middle Terraces
 - Modern Lakes

- Organic Deposits
- Outwash (Superior)
- Pre WI Keweenaw Till
- Pre WI Superior Outwash
- Slopewash Sand (Wisc.)
- Till (Superior)
- Lowest River Warren Terrace
- Middle River Warren Terrace
- Upper River Warren Terrace
- Unknown

South Washington Watershed District (SWWD) Plan Update



Surficial Geology

Scale: AS SHOWN	Drawn by: CLS	Checked by:	Project No.: 4876-000	Date: 10/05/05	Sheet:
-----------------	---------------	-------------	-----------------------	----------------	--------

Houston Engineering, Inc.
 Leave Nothing to Chance™
 10900 73rd Avenue North, Suite 106
 Maple Grove, MN 55369-5400
 Bus: (763) 493-4522 Fax: (763) 493-5572
www.houstonengineeringinc.com

Data Sources: Washington Conservation District, Metro GIS, MN DNR Data Deli
 Surficial Geology data generated by the MN Geological Society.