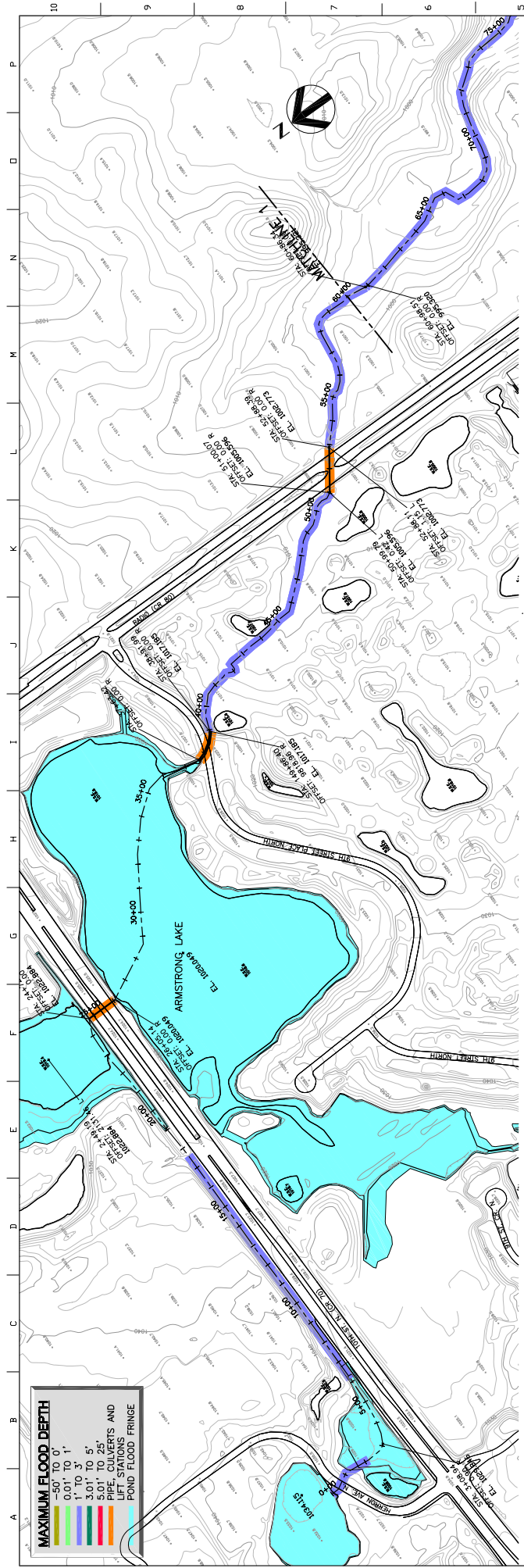
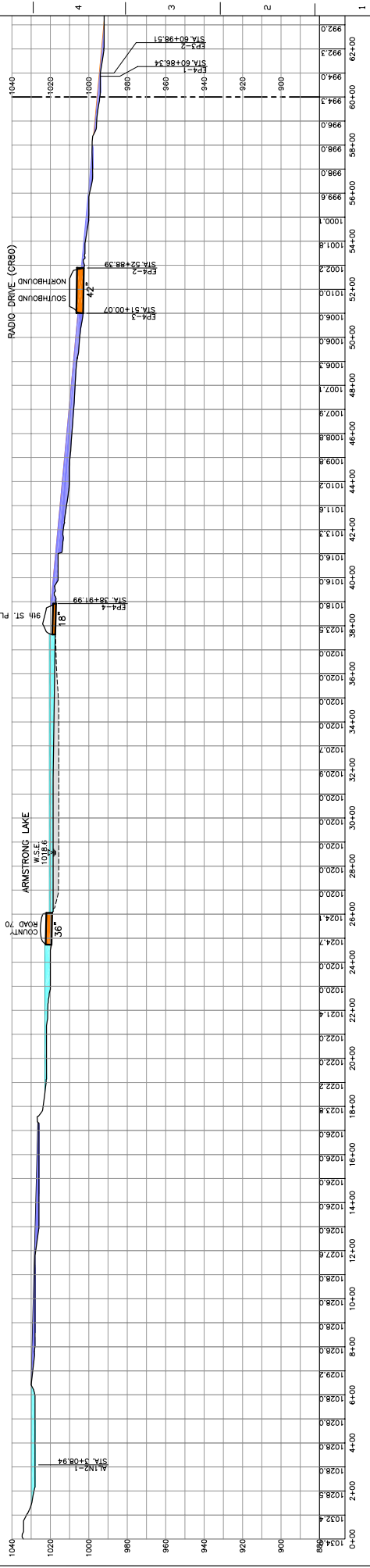


Figure 1- Overview Map, West Draw Subwatershed, South Washington Watershed District, Washington County, MN.



MAXIMUM FLOOD DEPTH
-50 TO 0'
0.01 TO 1'
1 TO 3'
3.01 TO 5'
5.01 TO 25 FT.
25 TO 50 FT.
50 FT. TO 250 FT. AND LIFT STATIONS
250 FT. TO 500 FT. AND LIFT STATIONS
POND FLOOD FRINGE



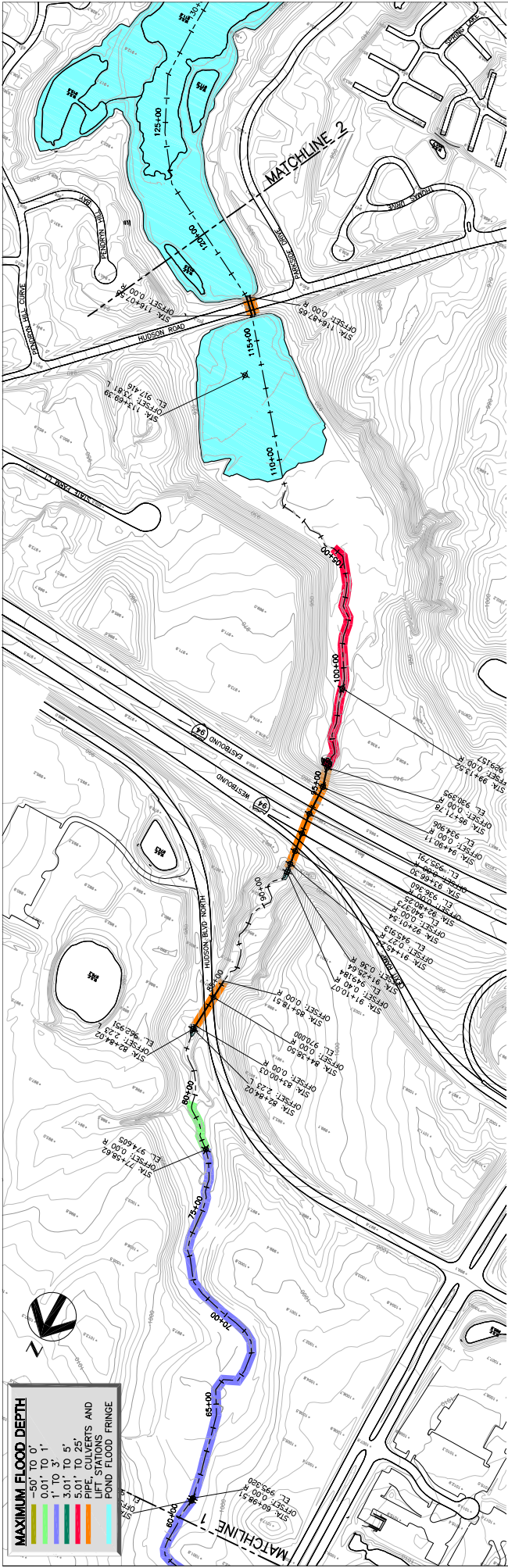
**9.3 INCH - 10 DAY FLOOD
PLAN AND PROFILE
STATION 0+00 TO 60+00**

Sheet	PP-1
Date	APRIL 2002
Scale	1"=200'
Product No.	DC59-000164
For Name	DCS50010-PP1

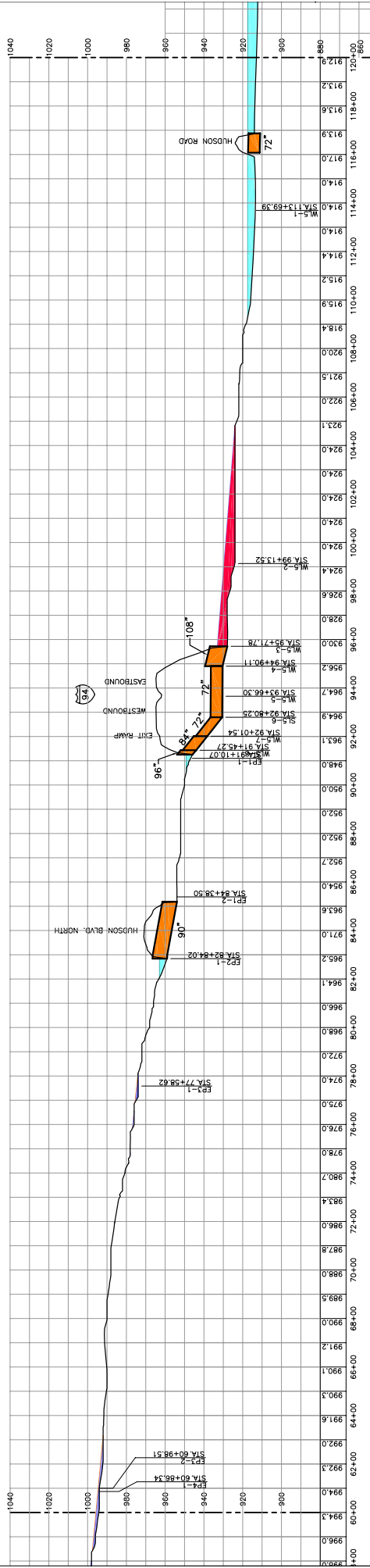
PROJECT NO.	R. Bradburn
ENGINEER	HDR
CHECKED	
DATE	
SCALE	

Author	Sketch	Check	Appr.





MAXIMUM FLOOD DEPTH	
0.0' TO 1'	Blue
1' TO 3'	Green
3.0' TO 5'	Yellow
5.0' TO 25'	Orange
25' TO 50'	Red
PIPE, CULVERTS AND LIFT STATIONS	Black
POND FLOOD FRINGE	Cyan



**9.3 INCH - 10 DAY FLOOD
PLAN AND PROFILE
STATION 60+00 TO 120+00**

DATE: APRIL 2002
SCALE: 1"=200'

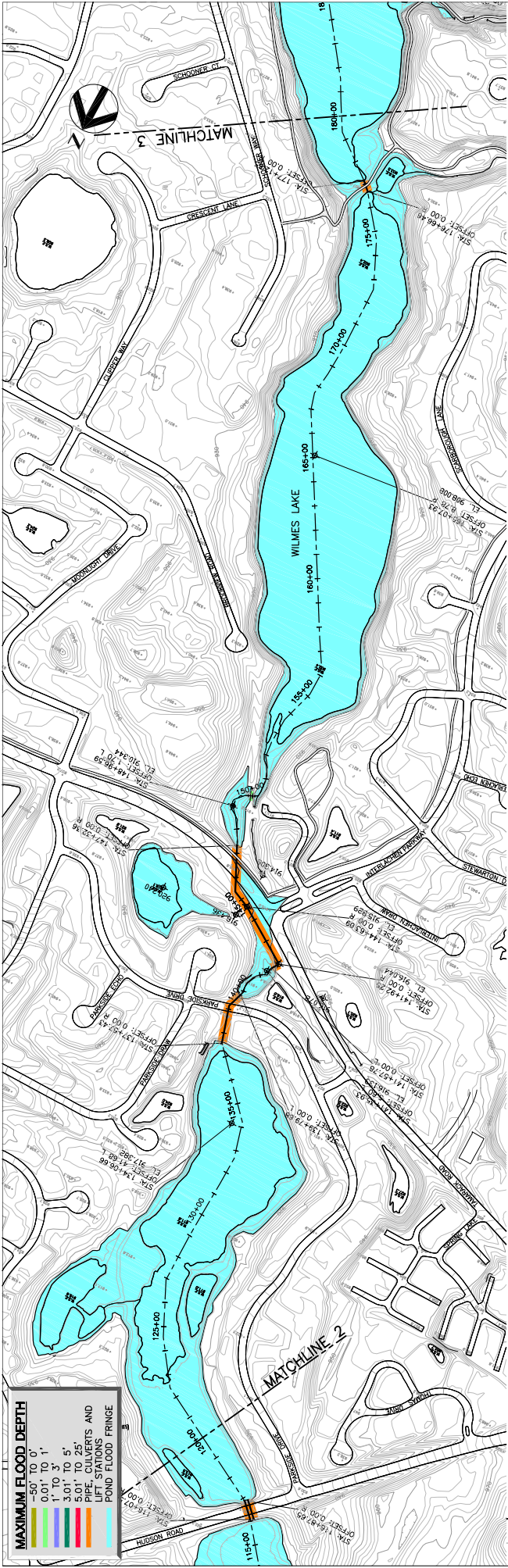
PROJECT NO.: 10550-0103E-4
SHEET NO.: 10550010-PP2

PROJECT MANAGER: R. BRODWIN
DESIGNER: [Blank]
CHECKER: [Blank]
DRAWN BY: [Blank]

DATE: APRIL 2002
SCALE: 1"=200'

HDR
HDR Engineering, Inc.

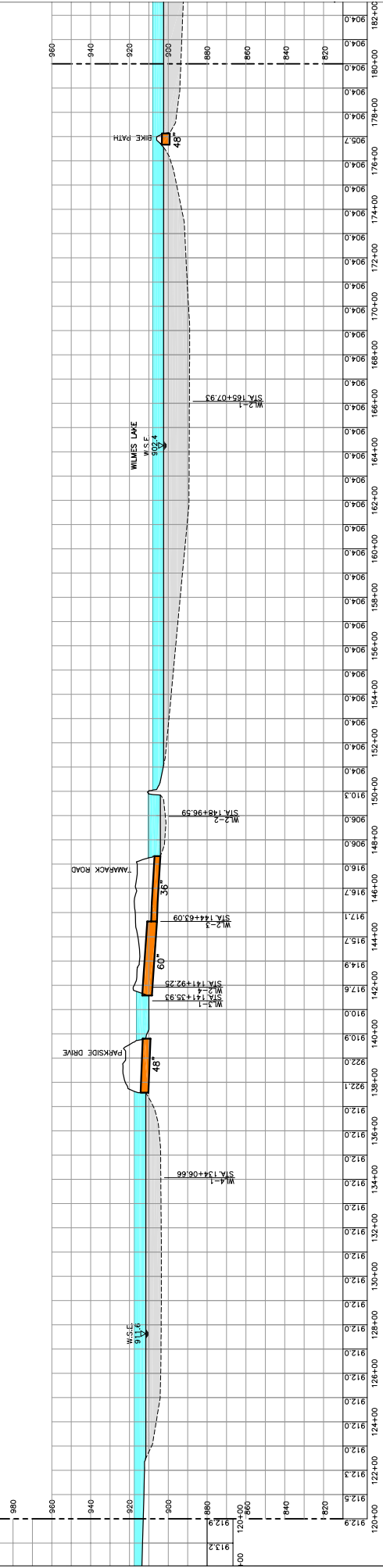
Southwest District
Washington
D.C.



MAXIMUM FLOOD DEPTH

0.00' TO 0.1'
0.1' TO 0.5'
0.5' TO 1.0'
1.0' TO 1.5'
1.5' TO 2.0'
2.0' TO 2.5'
2.5' TO 3.0'
3.0' TO 3.5'
3.5' TO 4.0'
4.0' TO 4.5'
4.5' TO 5.0'
5.0' TO 5.5'
5.5' TO 6.0'
6.0' TO 6.5'
6.5' TO 7.0'
7.0' TO 7.5'
7.5' TO 8.0'
8.0' TO 8.5'
8.5' TO 9.0'
9.0' TO 9.5'
9.5' TO 10.0'
10.0' TO 10.5'
10.5' TO 11.0'
11.0' TO 11.5'
11.5' TO 12.0'
12.0' TO 12.5'
12.5' TO 13.0'
13.0' TO 13.5'
13.5' TO 14.0'
14.0' TO 14.5'
14.5' TO 15.0'
15.0' TO 15.5'
15.5' TO 16.0'
16.0' TO 16.5'
16.5' TO 17.0'
17.0' TO 17.5'
17.5' TO 18.0'
18.0' TO 18.5'
18.5' TO 19.0'
19.0' TO 19.5'
19.5' TO 20.0'
20.0' TO 20.5'
20.5' TO 21.0'
21.0' TO 21.5'
21.5' TO 22.0'
22.0' TO 22.5'
22.5' TO 23.0'
23.0' TO 23.5'
23.5' TO 24.0'
24.0' TO 24.5'
24.5' TO 25.0'
25.0' TO 25.5'
25.5' TO 26.0'
26.0' TO 26.5'
26.5' TO 27.0'
27.0' TO 27.5'
27.5' TO 28.0'
28.0' TO 28.5'
28.5' TO 29.0'
29.0' TO 29.5'
29.5' TO 30.0'
30.0' TO 30.5'
30.5' TO 31.0'
31.0' TO 31.5'
31.5' TO 32.0'
32.0' TO 32.5'
32.5' TO 33.0'
33.0' TO 33.5'
33.5' TO 34.0'
34.0' TO 34.5'
34.5' TO 35.0'
35.0' TO 35.5'
35.5' TO 36.0'
36.0' TO 36.5'
36.5' TO 37.0'
37.0' TO 37.5'
37.5' TO 38.0'
38.0' TO 38.5'
38.5' TO 39.0'
39.0' TO 39.5'
39.5' TO 40.0'
40.0' TO 40.5'
40.5' TO 41.0'
41.0' TO 41.5'
41.5' TO 42.0'
42.0' TO 42.5'
42.5' TO 43.0'
43.0' TO 43.5'
43.5' TO 44.0'
44.0' TO 44.5'
44.5' TO 45.0'
45.0' TO 45.5'
45.5' TO 46.0'
46.0' TO 46.5'
46.5' TO 47.0'
47.0' TO 47.5'
47.5' TO 48.0'
48.0' TO 48.5'
48.5' TO 49.0'
49.0' TO 49.5'
49.5' TO 50.0'
50.0' TO 50.5'
50.5' TO 51.0'
51.0' TO 51.5'
51.5' TO 52.0'
52.0' TO 52.5'
52.5' TO 53.0'
53.0' TO 53.5'
53.5' TO 54.0'
54.0' TO 54.5'
54.5' TO 55.0'
55.0' TO 55.5'
55.5' TO 56.0'
56.0' TO 56.5'
56.5' TO 57.0'
57.0' TO 57.5'
57.5' TO 58.0'
58.0' TO 58.5'
58.5' TO 59.0'
59.0' TO 59.5'
59.5' TO 60.0'
60.0' TO 60.5'
60.5' TO 61.0'
61.0' TO 61.5'
61.5' TO 62.0'
62.0' TO 62.5'
62.5' TO 63.0'
63.0' TO 63.5'
63.5' TO 64.0'
64.0' TO 64.5'
64.5' TO 65.0'
65.0' TO 65.5'
65.5' TO 66.0'
66.0' TO 66.5'
66.5' TO 67.0'
67.0' TO 67.5'
67.5' TO 68.0'
68.0' TO 68.5'
68.5' TO 69.0'
69.0' TO 69.5'
69.5' TO 70.0'
70.0' TO 70.5'
70.5' TO 71.0'
71.0' TO 71.5'
71.5' TO 72.0'
72.0' TO 72.5'
72.5' TO 73.0'
73.0' TO 73.5'
73.5' TO 74.0'
74.0' TO 74.5'
74.5' TO 75.0'
75.0' TO 75.5'
75.5' TO 76.0'
76.0' TO 76.5'
76.5' TO 77.0'
77.0' TO 77.5'
77.5' TO 78.0'
78.0' TO 78.5'
78.5' TO 79.0'
79.0' TO 79.5'
79.5' TO 80.0'
80.0' TO 80.5'
80.5' TO 81.0'
81.0' TO 81.5'
81.5' TO 82.0'
82.0' TO 82.5'
82.5' TO 83.0'
83.0' TO 83.5'
83.5' TO 84.0'
84.0' TO 84.5'
84.5' TO 85.0'
85.0' TO 85.5'
85.5' TO 86.0'
86.0' TO 86.5'
86.5' TO 87.0'
87.0' TO 87.5'
87.5' TO 88.0'
88.0' TO 88.5'
88.5' TO 89.0'
89.0' TO 89.5'
89.5' TO 90.0'
90.0' TO 90.5'
90.5' TO 91.0'
91.0' TO 91.5'
91.5' TO 92.0'
92.0' TO 92.5'
92.5' TO 93.0'
93.0' TO 93.5'
93.5' TO 94.0'
94.0' TO 94.5'
94.5' TO 95.0'
95.0' TO 95.5'
95.5' TO 96.0'
96.0' TO 96.5'
96.5' TO 97.0'
97.0' TO 97.5'
97.5' TO 98.0'
98.0' TO 98.5'
98.5' TO 99.0'
99.0' TO 99.5'
99.5' TO 100.0'

PIPE, CULVERTS AND LIFT STATIONS
POND FLOOD FRINGE



**9.3 INCH - 10 DAY FLOOD
PLAN AND PROFILE
STATION 120+00 TO 180+00**

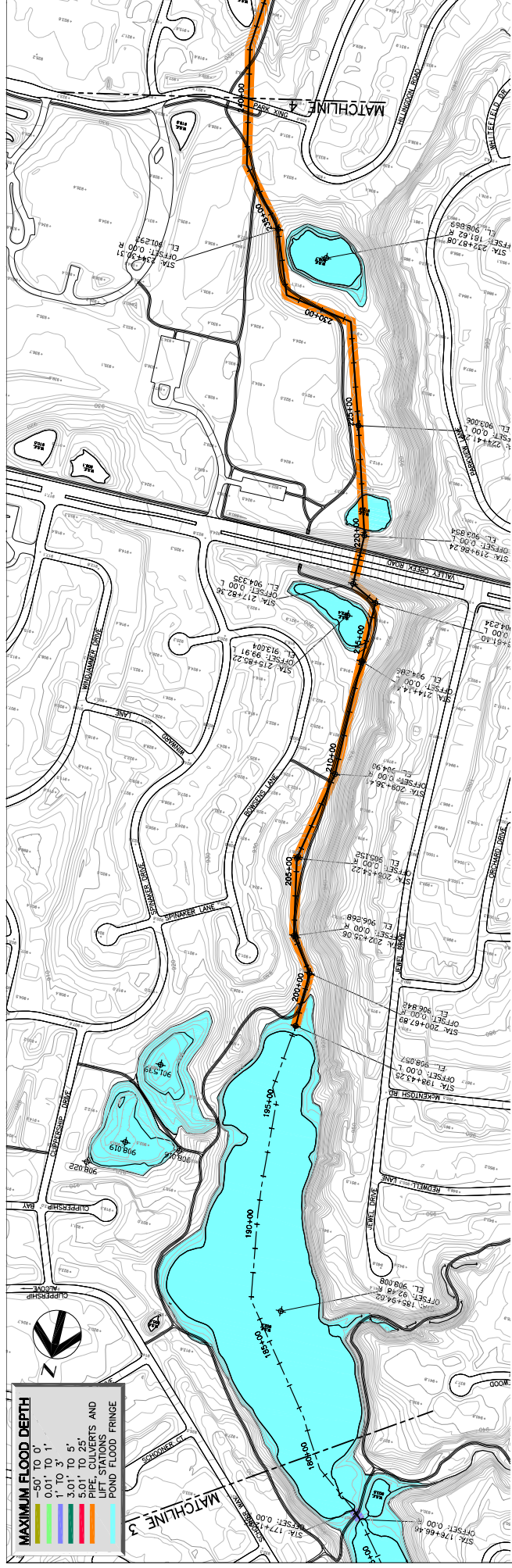
DATE: APRIL 2002
SCALE: 1"=200'

PROJECT No. 10550-0103-64
DRAWING No. PP-3

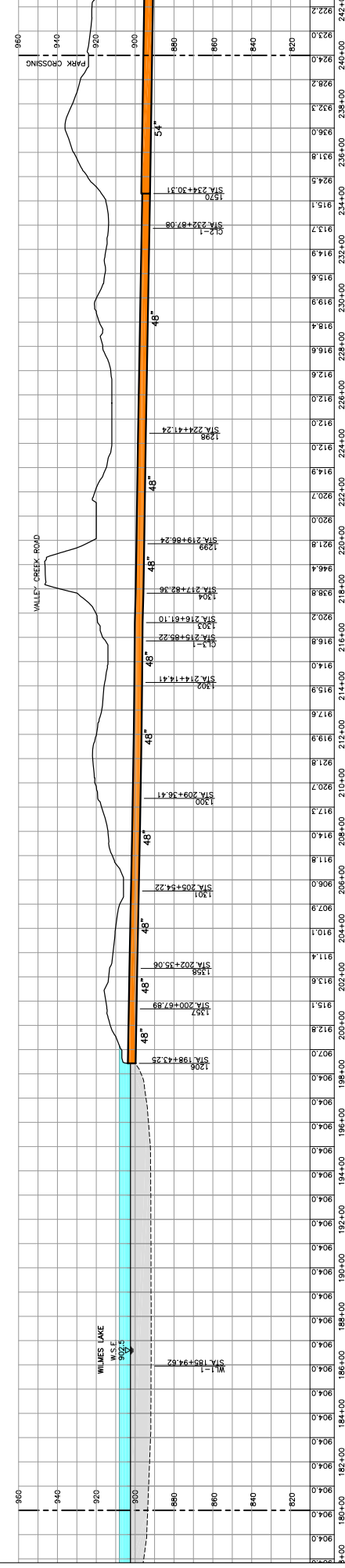
HDR
HDR Engineering, Inc.

Project Manager: R. Brakinn
Designer: [Blank]
Checker: [Blank]
In Charge: [Blank]
Scale: [Blank]

Sheet: [Blank] of [Blank]
Title: [Blank]



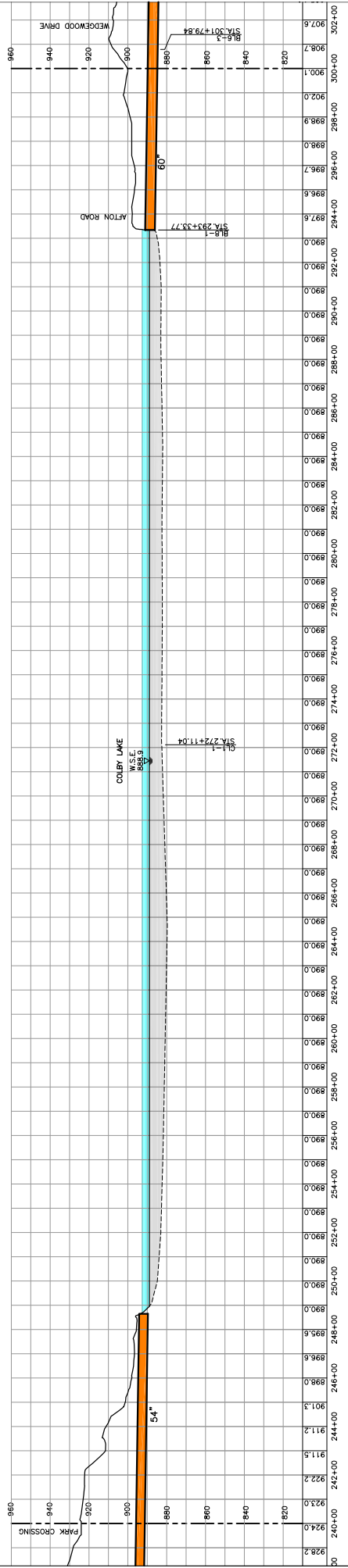
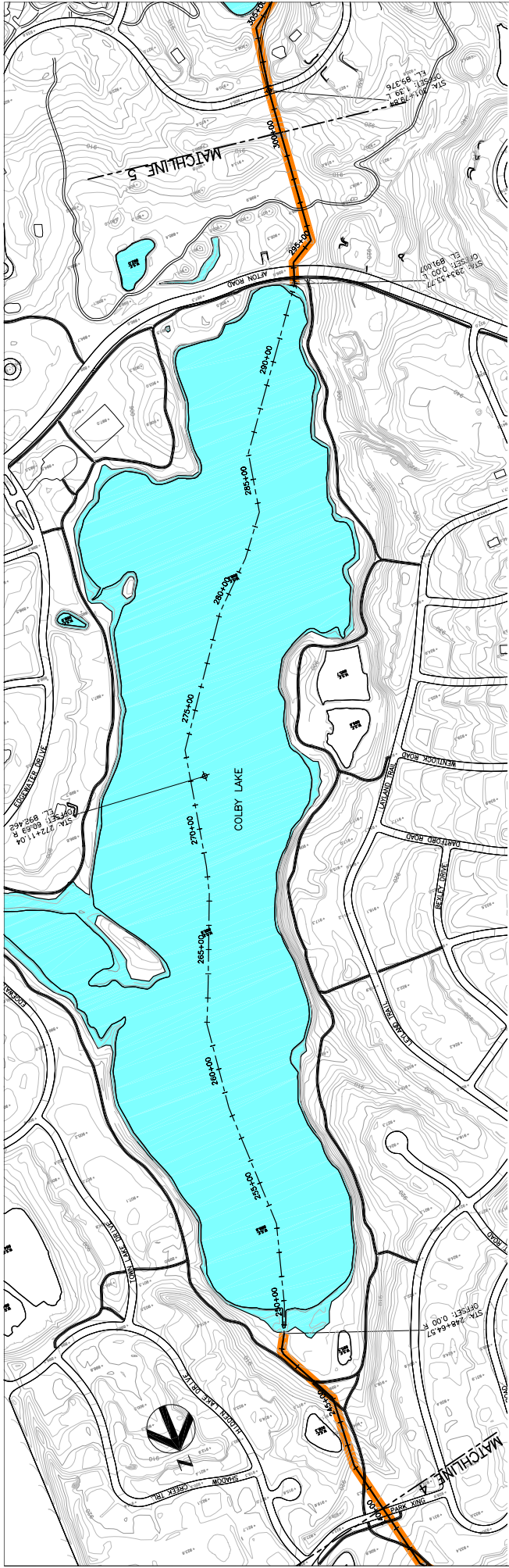
MAXIMUM FLOOD DEPTH	
0.0' TO 0.1'	Yellow
0.1' TO 1'	Light Orange
1' TO 3'	Orange
3.0' TO 5'	Red
5.0' TO 25'	Dark Red
PIPE, CULVERTS AND LIFT STATIONS	Orange
POUND FLOOD FRINGE	Cyan



9.3 INCH - 10 DAY FLOOD PLAN AND PROFILE STATION 180+00 TO 240+00

DATE	APRIL 2002	PROJECT No.	10550-01015-4	DRAWING No.	PP-4
SCALE	1"=200'	FIG. No.	10550010-PP-4		

Project Manager	R. Bradburn	Checker	K. Hoehn
Designer			
Drawn			



9.3 INCH - 10 DAY FLOOD PLAN AND PROFILE STATION 240+00 TO 300+00

HDR
HDR Engineering, Inc.

Project Manager
R. Brodwin

Designer
Designer

Checker
K. Hoehn

Drawn
R. Brodwin

Checked
K. Hoehn

Scale
1"=200'

DATE: APRIL 2002

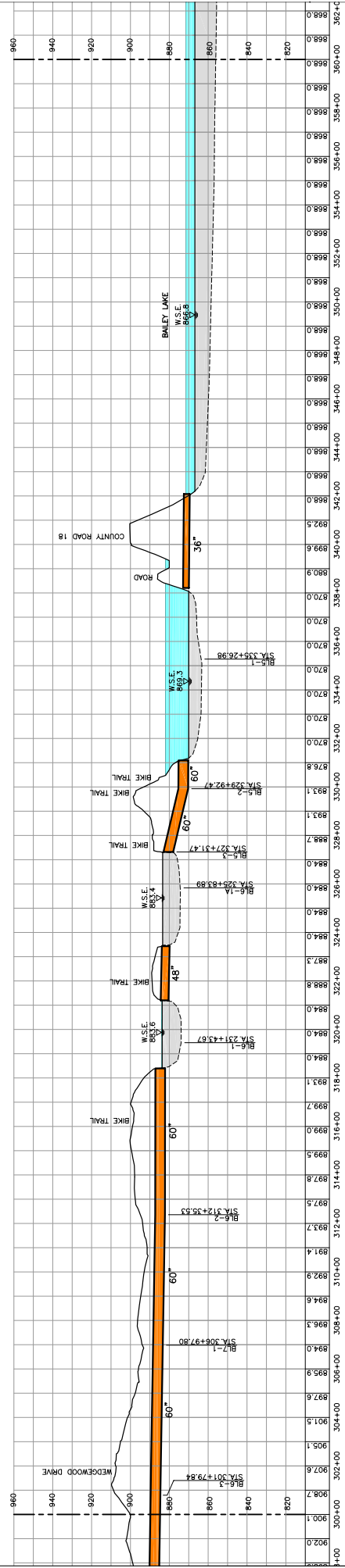
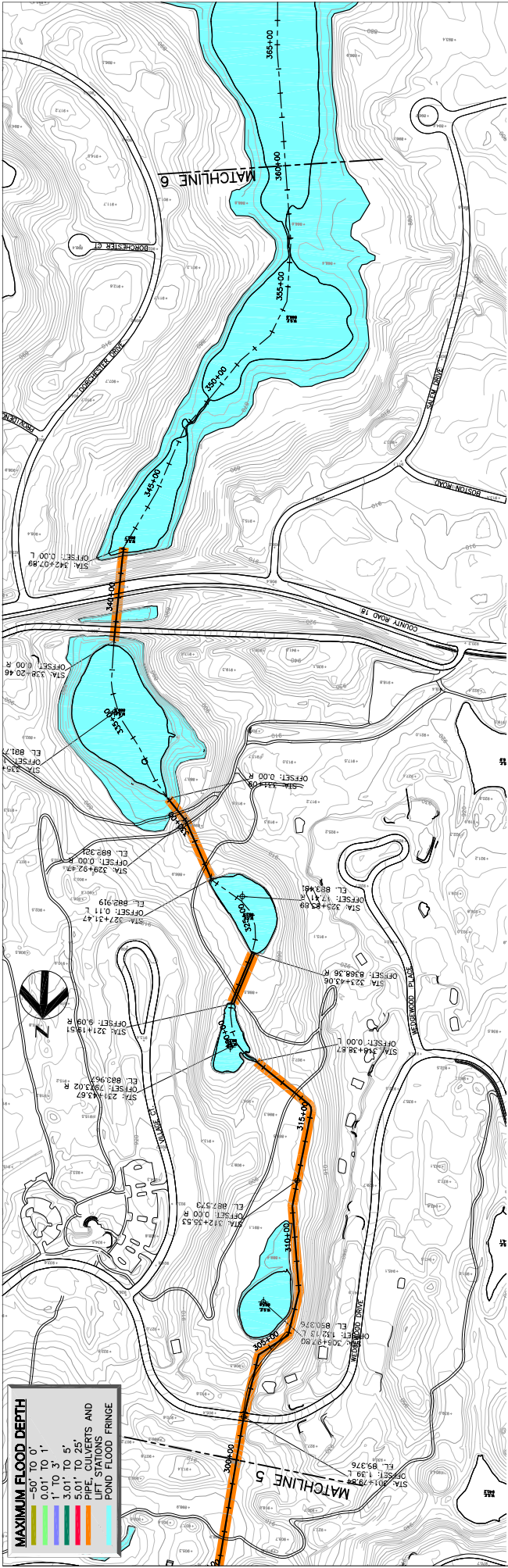
PROJECT No. 10550-0103-64

DRAWING No. PP-5

DATE: APRIL 2002

PROJECT No. 10550-0103-64

DRAWING No. PP-5



9.3 INCH - 10 DAY FLOOD PLAN AND PROFILE
STATION 300+00 TO 360+00

DATE: APRIL 2002
PROJECT NO.: 10550-010164
DRAWING NO.: PP-6

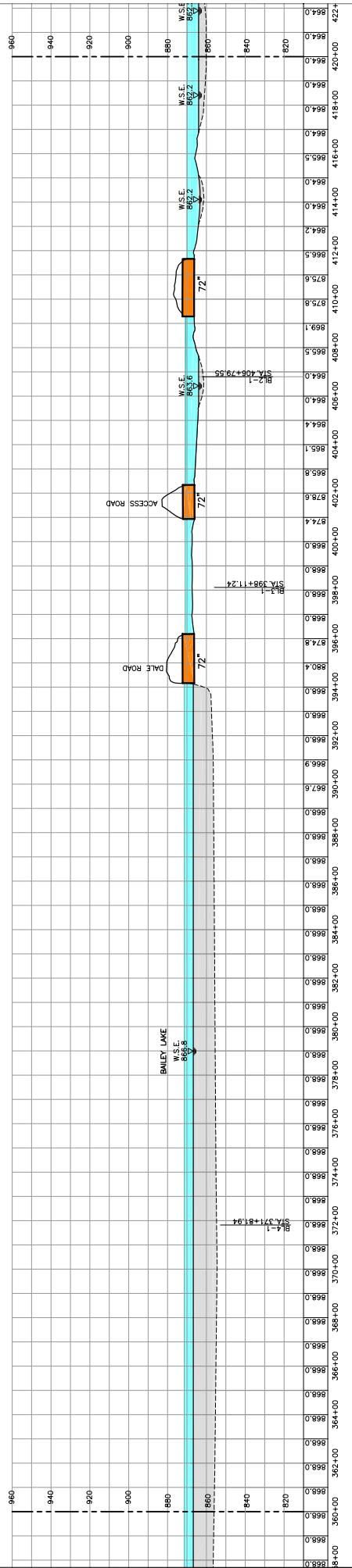
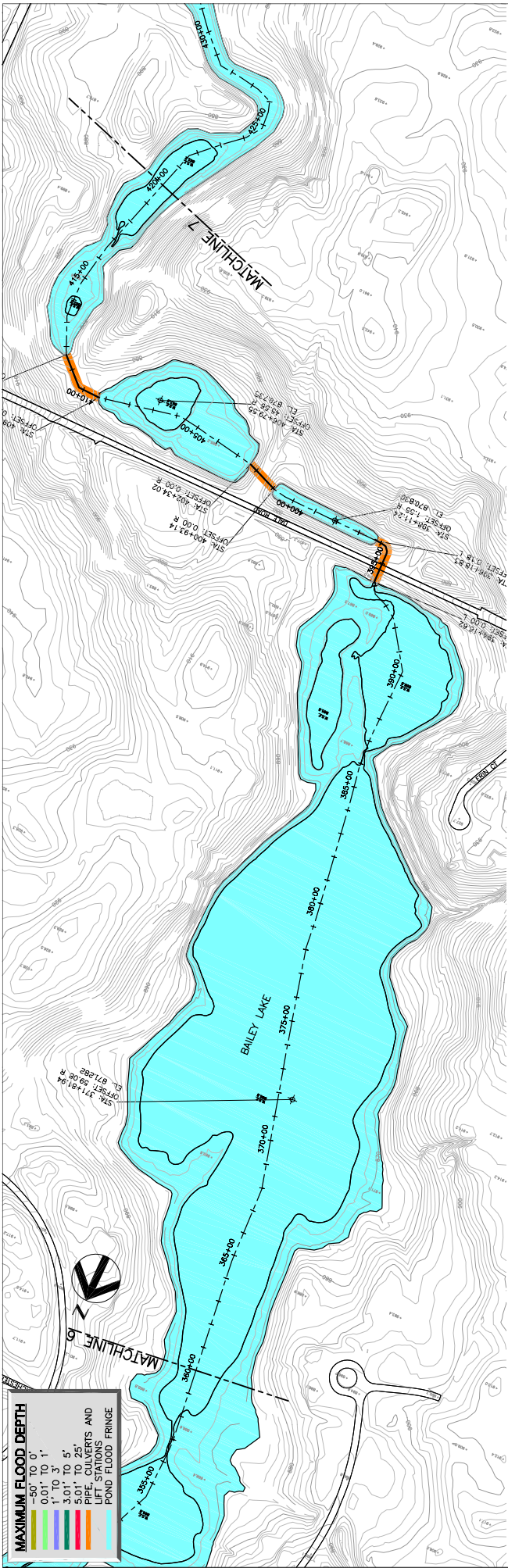
SCALE: 1"=200'
SHEET NO.: 10550010-PP6

PROJECT MANAGER: R. BRODWIN
DESIGNER: [Blank]
CHECKER: [Blank]
SCALE: [Blank]

DATE: APRIL 2002
PROJECT NO.: 10550-010164
DRAWING NO.: PP-6


HDR
HDR Engineering, Inc.

Southwest Washington
Water Infrastructure District



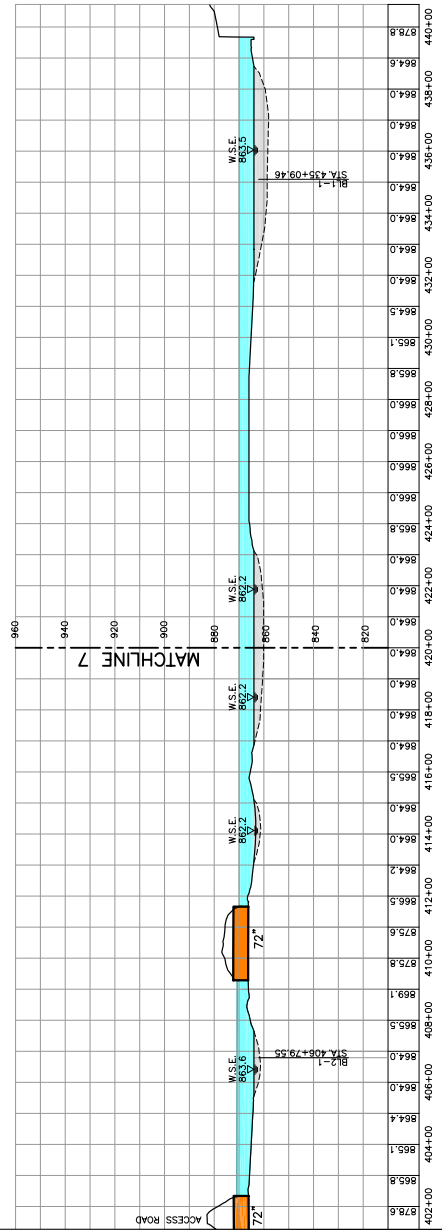
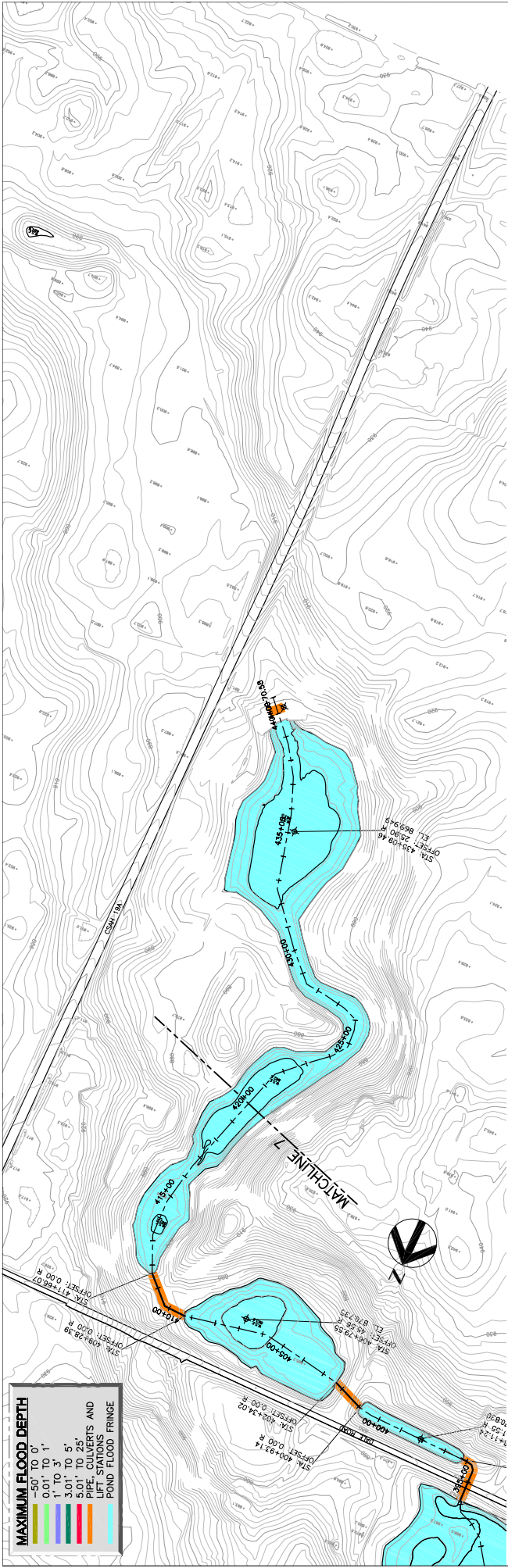
**9.3 INCH - 10 DAY FLOOD
PLAN AND PROFILE
STATION 360+00 TO 420+00**

Date: APRIL 2002 Scale: 1"=200'	Project No.: 10550-010.16.4 File Name: 10550010-PP-7	Drawing No.: PP-7	



HDR
HDR Engineering, Inc.

Project Manager: R. Brakinn	Checker: K. Hodne
Designer: K. Hodne	Plot Date: APRIL 2002



**9.3 INCH - 10 DAY FLOOD
PLAN AND PROFILE,
STATION 420+00 TO END**

DATE: APRIL 2002
SCALE: 1"=200'

PROJECT No. 10550-010.16-4
SHEET No. 10550010-PP8

PROJECT Manager
R. Brecklin

DESIGNER
R. Brecklin

CHECKED
K. Hoehn

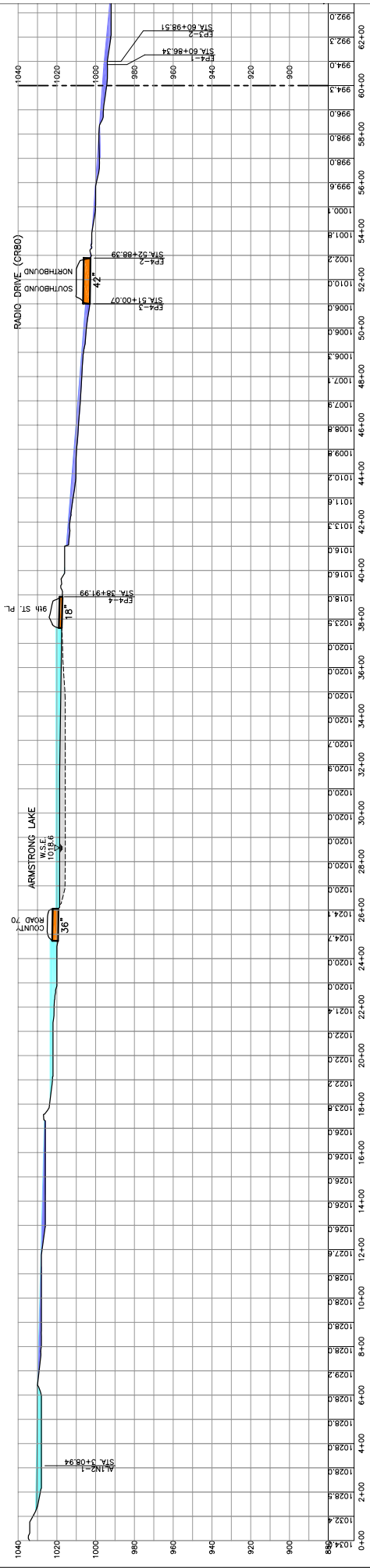
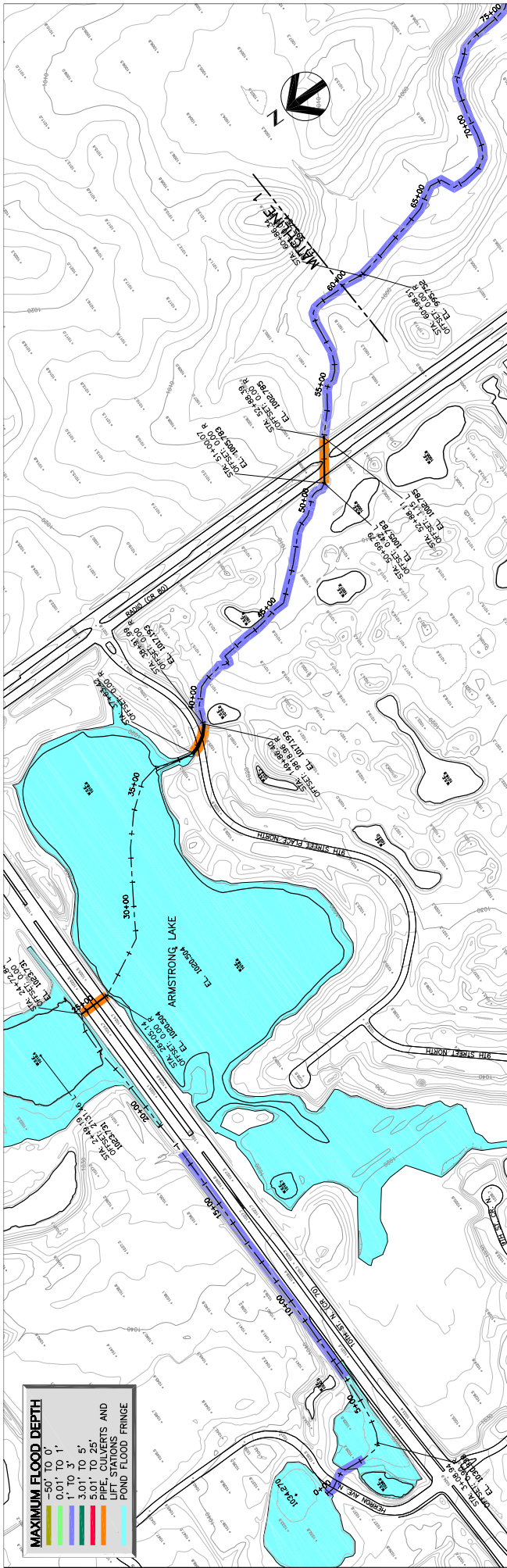
DATE
APRIL 2002

SCALE
1"=200'

HDR
HDR Engineering, Inc.

10000 RIVER ROAD
SUITE 200
DALLAS, TEXAS 75244

Southwest District
WWD
Washington
D.C.



6.3 INCH IN 24 HOUR FLOOD PLAN AND PROFILE STATION 0+00 TO 60+00

DATE: APRIL 2002
DRAWN BY: [Name]
CHECKED BY: [Name]

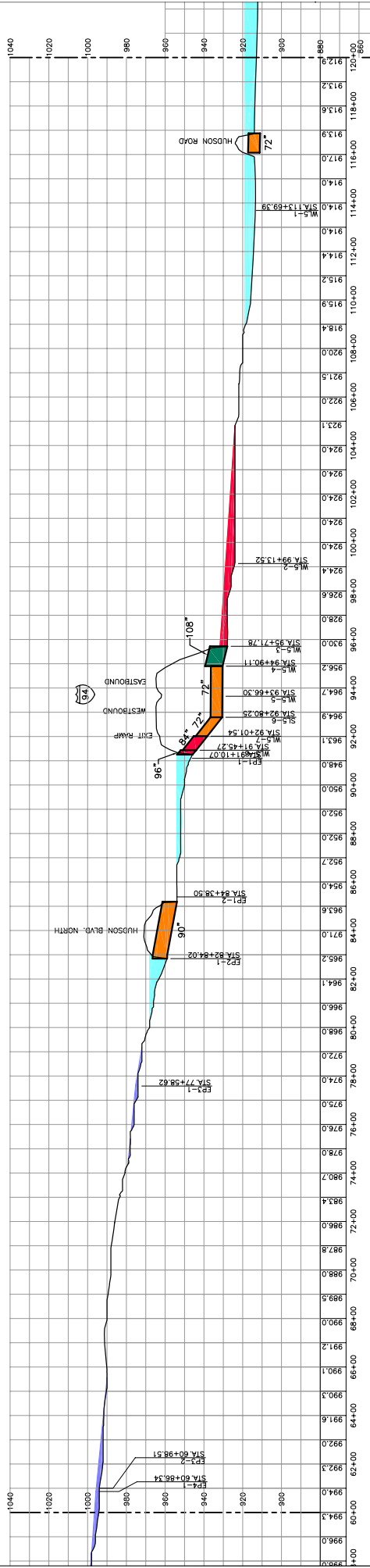
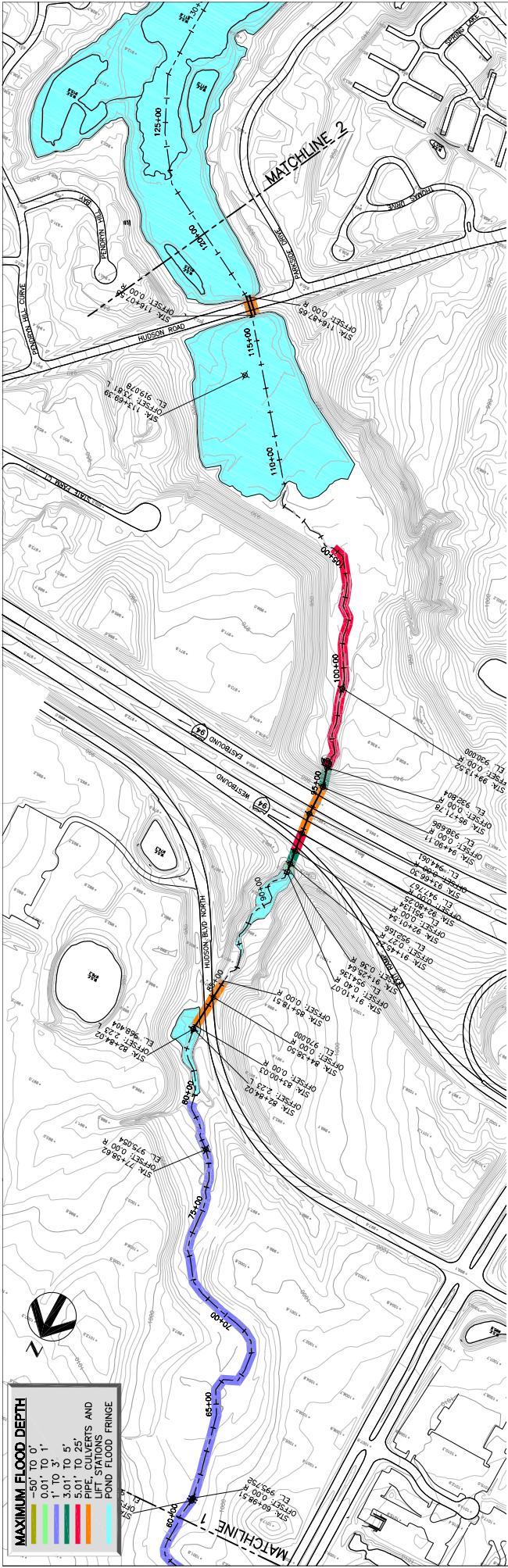
PROJECT No. 1055P-010164
JOB No. 1055010-PP1

PP-1

HDR
HDR Engineering, Inc.

PROJECT Manager: R. Beckmann
Engineer: [Name]
Designer: [Name]
Checker: [Name]
Drawn: [Name]

DATE: [Date]
DRAWN BY: [Name]
CHECKED BY: [Name]



**6.3 INCH - 24 HOUR FLOOD
PLAN AND PROFILE
STATION 60+00 TO 120+00**

DATE: APRIL 2002

PROJECT No. 10550-0103E4

SCALE: 1"=200'

DRAWING No. PP-2

PROJECT No. 10550010-PP2

Project Manager: R. Brodwin

Designer: [Blank]

Checker: [Blank]

Scale: [Blank]

Drawn: [Blank]

Checked: [Blank]

Plot Date: [Blank]

Plot Time: [Blank]

Plot User: [Blank]

Plot Device: [Blank]

Plot Path: [Blank]

Plot Scale: [Blank]

Plot Orientation: [Blank]

Plot Color: [Blank]

Plot Font: [Blank]

Plot Line: [Blank]

Plot Text: [Blank]

Plot Title: [Blank]

Plot Footer: [Blank]

Plot Header: [Blank]

Plot Border: [Blank]

Plot Background: [Blank]

Plot Print: [Blank]

Plot Cancel: [Blank]

Plot Help: [Blank]

Plot About: [Blank]

Plot Settings: [Blank]

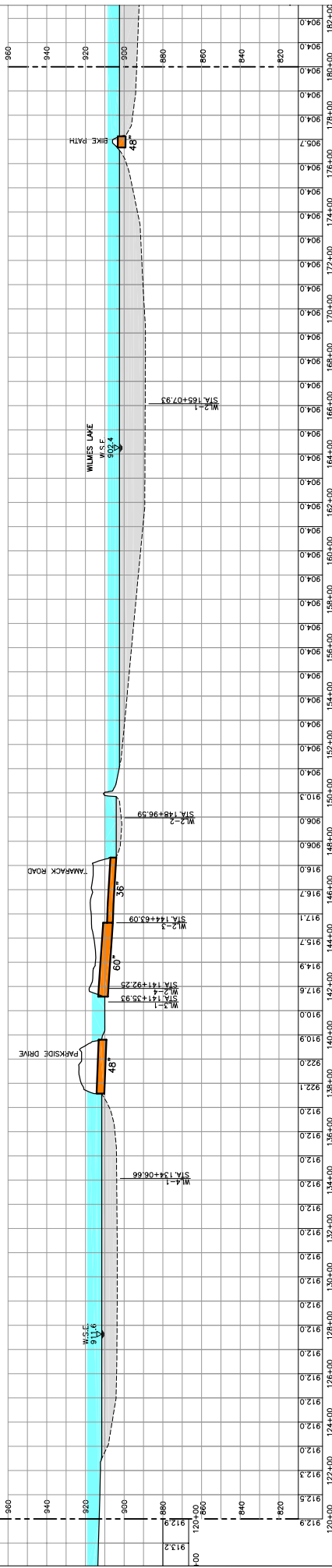
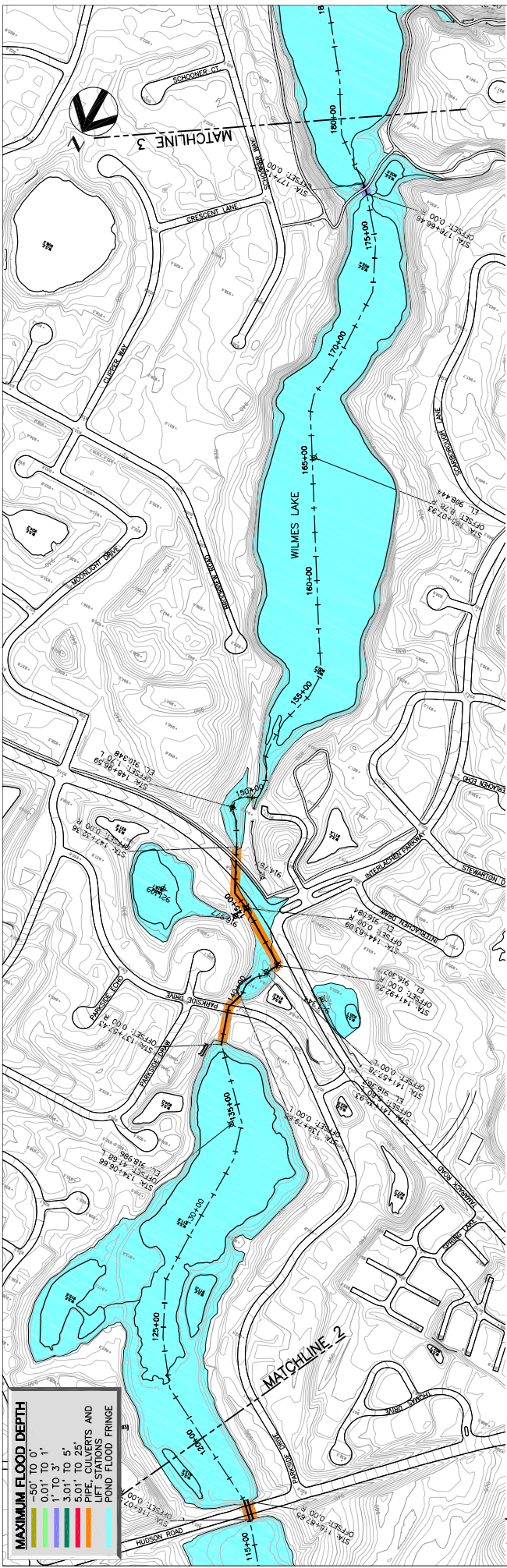
Plot Help: [Blank]


Plot About: [Blank]


Plot Settings: [Blank]

HDR
HDR Engineering, Inc.

10000 W. LITTLE BLVD.
SUITE 200
DALLAS, TEXAS 75243
PHONE: 972.961.8600
FAX: 972.961.8601
WWW.HDR.COM



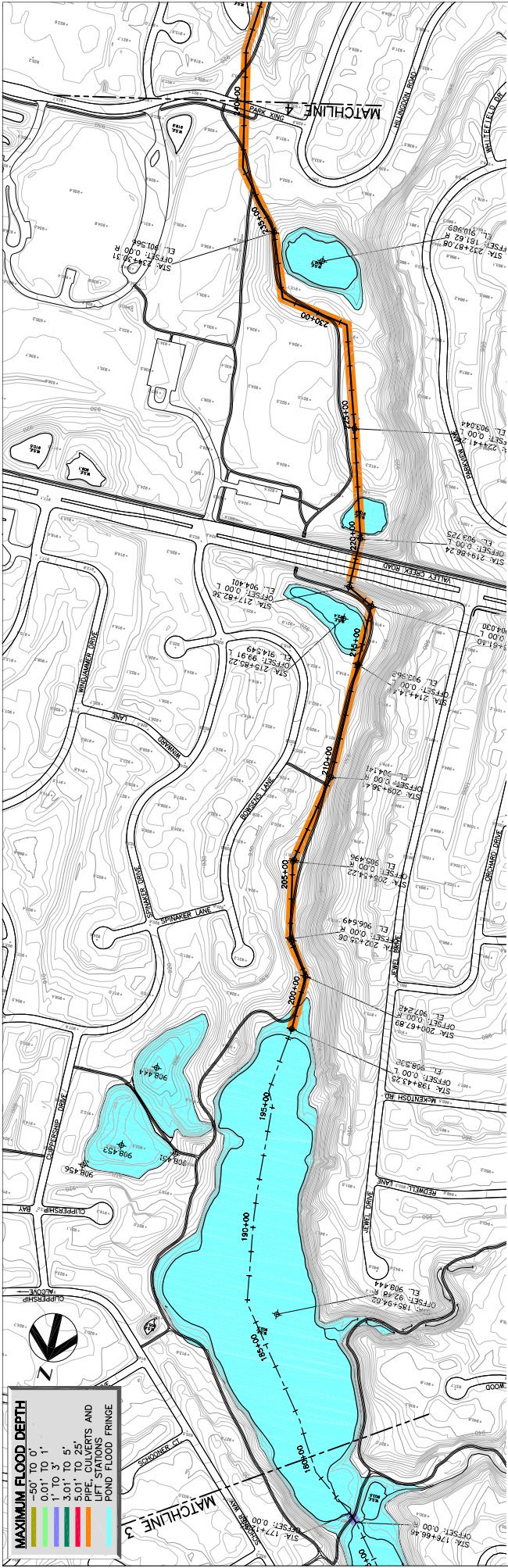




6.3 INCH - 24 HOUR FLOOD PLAN AND PROFILE STATION 120+00 TO 180+00

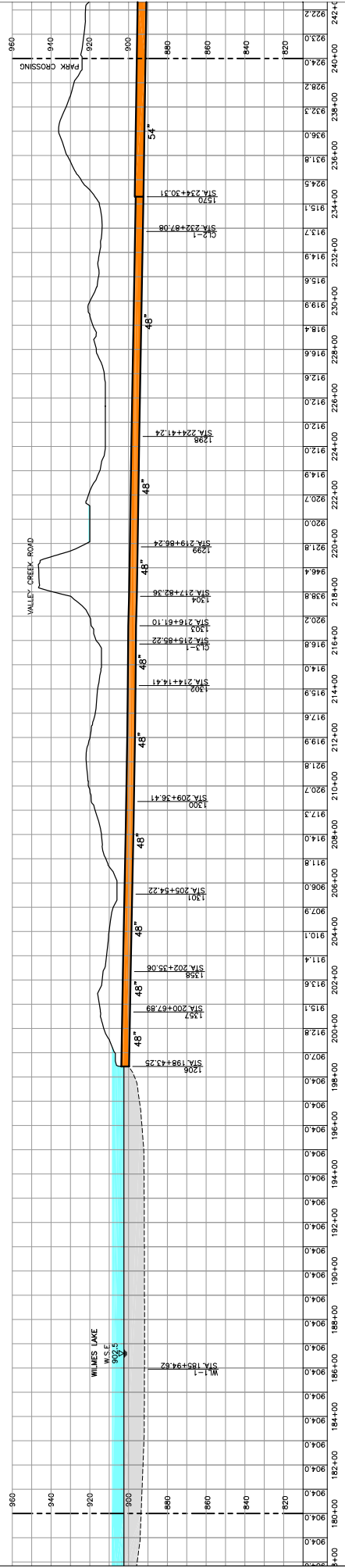
DATE: APRIL 2002
PROJECT No.: 10550-0103E4
DRAWING No.: PP-3
SCALE: 1"=200'

Rev	Description	Date	Drawn	Checked	App'd



MAXIMUM FLOOD DEPTH

0.01' TO 0.1'
0.1' TO 1'
1' TO 3'
3.01' TO 5'
5.01' TO 25'
PIPE, CULVERTS AND LIFT STATIONS
POND FLOOD FRINGE



**6.3 INCH, 24 HOUR FLOOD
PLAN AND PROFILE
STATION 180+00 TO 240+00**

Project Manager: R. Brubaker

Designer: [Blank]

Checker: [Blank]

Scale: 1" = 40'

Drawn: [Blank]

Site: [Blank]

Sheet: [Blank]

Stationing: [Blank]

Project No. 10550-01016-4

Sheet No. 10550010-PP-4

Date: APRIL 2002

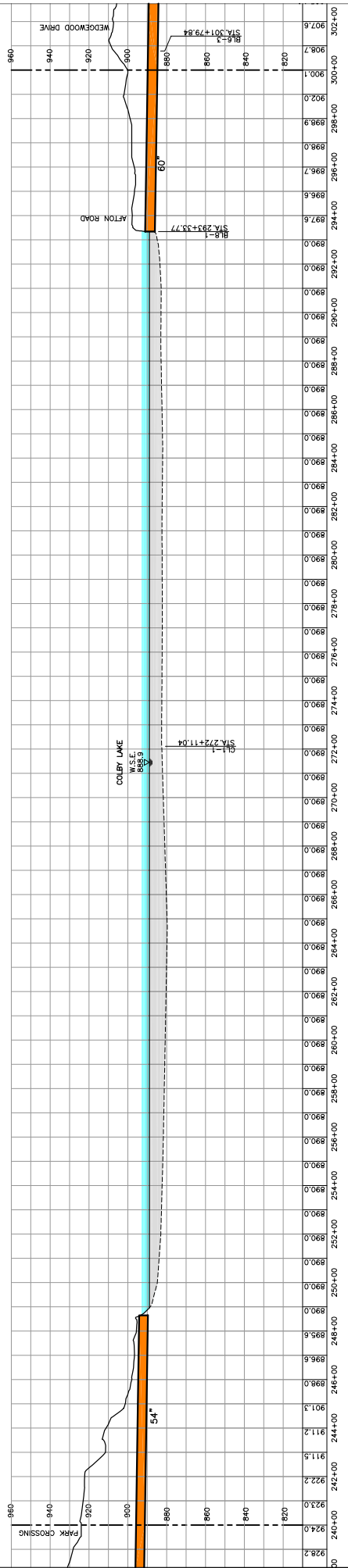
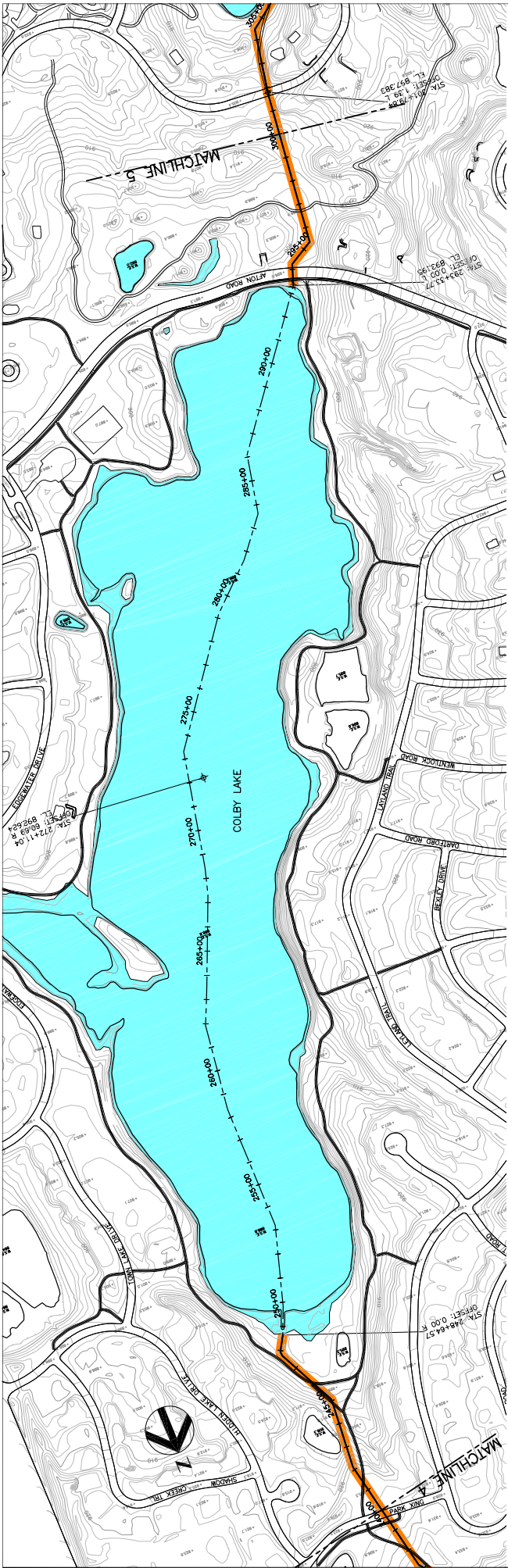
Scale: 1"=200'

Drawing No. PP-4

HDR Engineering, Inc.

10000 W. LITTLE LANE, SUITE 200, WESTLAKE, WA 98052

Southwest Washington Water District



**6.3 INCH - 24 HOUR FLOOD
PLAN AND PROFILE
STATION 240+00 TO 300+00**

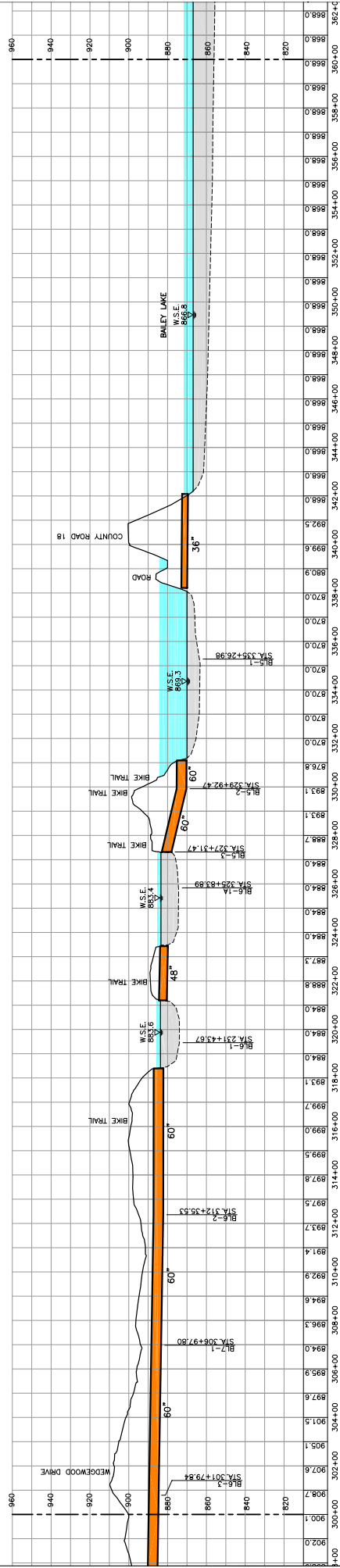
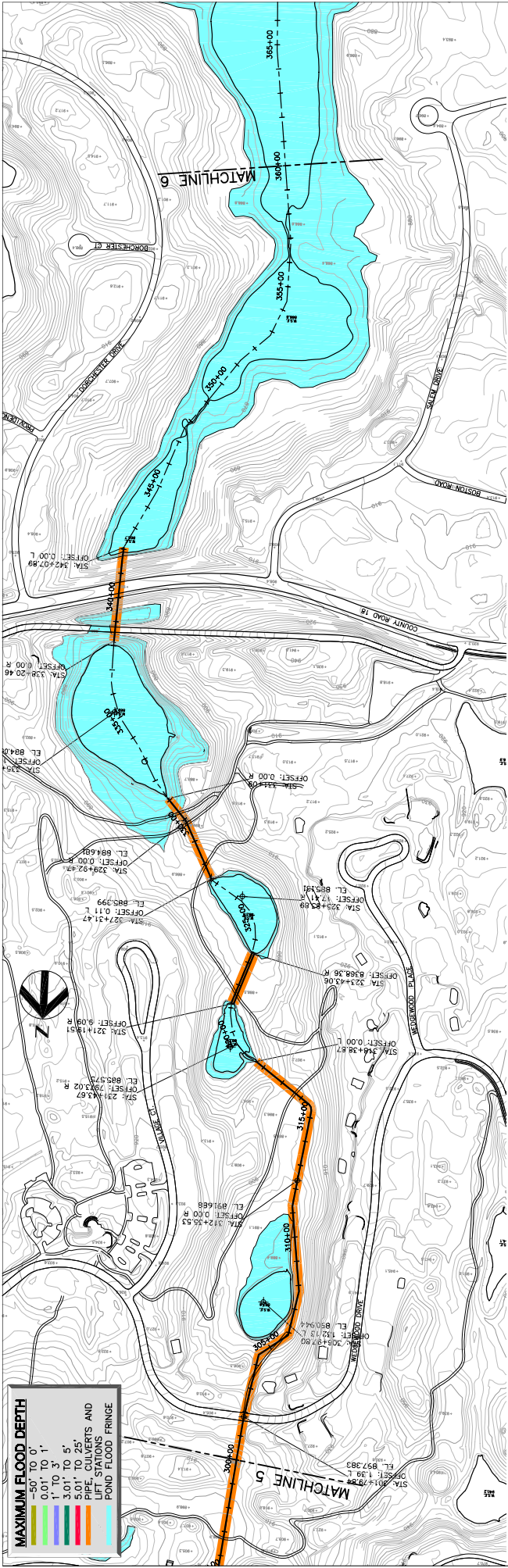


HDR
HDR Engineering, Inc.

Project Manager: R. Brodwin
 Designer: []
 Checker: []
 In Charge: M. L. []
 Date: APRIL 2002
 Scale: 1"=200'

Station	Elevation	Profile	Ground	Notes
240+00	928.0			
242+00	922.2			
244+00	911.5			
246+00	901.3			
248+00	895.6			
250+00	890.0			
252+00	885.0			
254+00	880.0			
256+00	875.0			
258+00	870.0			
260+00	865.0			
262+00	860.0			
264+00	855.0			
266+00	850.0			
268+00	845.0			
270+00	840.0			
272+00	835.0			
274+00	830.0			
276+00	825.0			
278+00	820.0			
280+00	815.0			
282+00	810.0			
284+00	805.0			
286+00	800.0			
288+00	795.0			
290+00	790.0			
292+00	785.0			
294+00	780.0			
296+00	775.0			
298+00	770.0			
300+00	765.0			
302+00	760.0			

DATE: APRIL 2002
 PROJECT NO.: 10550-0103-64
 DRAWING NO.: PP-5
 SCALE: 1"=200'



Project Manager
R. Brubaker

Designer
K. Hodge

Checker
K. Hodge

Scale
1"=200'

Sheet
PP-6

Project No. 10550-010.16.4

File Name 10550010-PP6

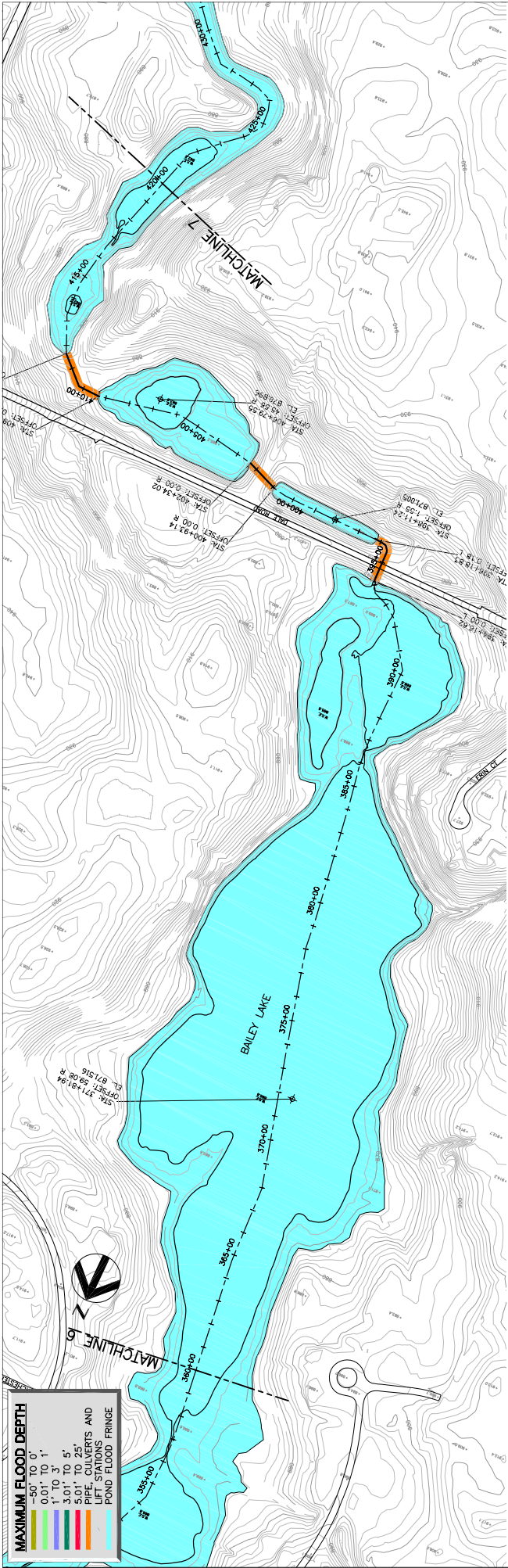
Date APRIL 2002

Scale 1"=200'

HDR
HDR Engineering, Inc.

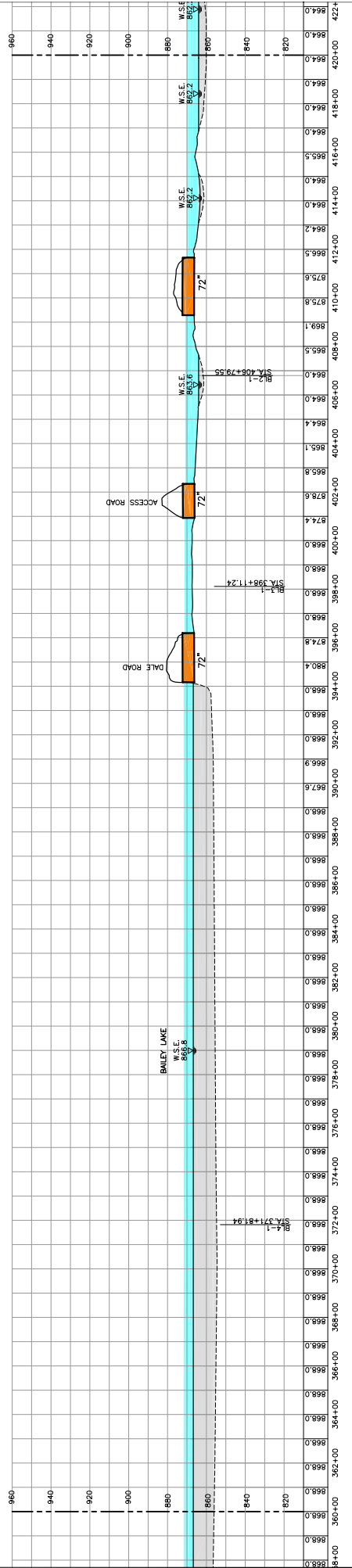
Southwest Washington
WWA District

**6.3 INCH - 24 HOUR FLOOD
PLAN AND PROFILE
STATION 300+00 TO 360+00**



MAXIMUM FLOOD DEPTH

0.50' TO 0'
0.51' TO 1'
1.01' TO 1.5'
1.51' TO 2'
2.01' TO 2.5'
2.51' TO 3'
3.01' TO 3.5'
3.51' TO 4'
4.01' TO 4.5'
4.51' TO 5'
5.01' TO 5.5'
5.51' TO 6'
6.01' TO 6.5'
6.51' TO 7'
7.01' TO 7.5'
7.51' TO 8'
8.01' TO 8.5'
8.51' TO 9'
9.01' TO 9.5'
9.51' TO 10'
10.01' TO 10.5'
10.51' TO 11'
11.01' TO 11.5'
11.51' TO 12'
12.01' TO 12.5'
12.51' TO 13'
13.01' TO 13.5'
13.51' TO 14'
14.01' TO 14.5'
14.51' TO 15'
15.01' TO 15.5'
15.51' TO 16'
16.01' TO 16.5'
16.51' TO 17'
17.01' TO 17.5'
17.51' TO 18'
18.01' TO 18.5'
18.51' TO 19'
19.01' TO 19.5'
19.51' TO 20'
20.01' TO 20.5'
20.51' TO 21'
21.01' TO 21.5'
21.51' TO 22'
22.01' TO 22.5'
22.51' TO 23'
23.01' TO 23.5'
23.51' TO 24'
24.01' TO 24.5'
24.51' TO 25'
25.01' TO 25.5'
25.51' TO 26'
26.01' TO 26.5'
26.51' TO 27'
27.01' TO 27.5'
27.51' TO 28'
28.01' TO 28.5'
28.51' TO 29'
29.01' TO 29.5'
29.51' TO 30'
30.01' TO 30.5'
30.51' TO 31'
31.01' TO 31.5'
31.51' TO 32'
32.01' TO 32.5'
32.51' TO 33'
33.01' TO 33.5'
33.51' TO 34'
34.01' TO 34.5'
34.51' TO 35'
35.01' TO 35.5'
35.51' TO 36'
36.01' TO 36.5'
36.51' TO 37'
37.01' TO 37.5'
37.51' TO 38'
38.01' TO 38.5'
38.51' TO 39'
39.01' TO 39.5'
39.51' TO 40'
40.01' TO 40.5'
40.51' TO 41'
41.01' TO 41.5'
41.51' TO 42'
42.01' TO 42.5'
42.51' TO 43'
43.01' TO 43.5'
43.51' TO 44'
44.01' TO 44.5'
44.51' TO 45'
45.01' TO 45.5'
45.51' TO 46'
46.01' TO 46.5'
46.51' TO 47'
47.01' TO 47.5'
47.51' TO 48'
48.01' TO 48.5'
48.51' TO 49'
49.01' TO 49.5'
49.51' TO 50'
50.01' TO 50.5'
50.51' TO 51'
51.01' TO 51.5'
51.51' TO 52'
52.01' TO 52.5'
52.51' TO 53'
53.01' TO 53.5'
53.51' TO 54'
54.01' TO 54.5'
54.51' TO 55'
55.01' TO 55.5'
55.51' TO 56'
56.01' TO 56.5'
56.51' TO 57'
57.01' TO 57.5'
57.51' TO 58'
58.01' TO 58.5'
58.51' TO 59'
59.01' TO 59.5'
59.51' TO 60'
60.01' TO 60.5'
60.51' TO 61'
61.01' TO 61.5'
61.51' TO 62'
62.01' TO 62.5'
62.51' TO 63'
63.01' TO 63.5'
63.51' TO 64'
64.01' TO 64.5'
64.51' TO 65'
65.01' TO 65.5'
65.51' TO 66'
66.01' TO 66.5'
66.51' TO 67'
67.01' TO 67.5'
67.51' TO 68'
68.01' TO 68.5'
68.51' TO 69'
69.01' TO 69.5'
69.51' TO 70'
70.01' TO 70.5'
70.51' TO 71'
71.01' TO 71.5'
71.51' TO 72'
72.01' TO 72.5'
72.51' TO 73'
73.01' TO 73.5'
73.51' TO 74'
74.01' TO 74.5'
74.51' TO 75'
75.01' TO 75.5'
75.51' TO 76'
76.01' TO 76.5'
76.51' TO 77'
77.01' TO 77.5'
77.51' TO 78'
78.01' TO 78.5'
78.51' TO 79'
79.01' TO 79.5'
79.51' TO 80'
80.01' TO 80.5'
80.51' TO 81'
81.01' TO 81.5'
81.51' TO 82'
82.01' TO 82.5'
82.51' TO 83'
83.01' TO 83.5'
83.51' TO 84'
84.01' TO 84.5'
84.51' TO 85'
85.01' TO 85.5'
85.51' TO 86'
86.01' TO 86.5'
86.51' TO 87'
87.01' TO 87.5'
87.51' TO 88'
88.01' TO 88.5'
88.51' TO 89'
89.01' TO 89.5'
89.51' TO 90'
90.01' TO 90.5'
90.51' TO 91'
91.01' TO 91.5'
91.51' TO 92'
92.01' TO 92.5'
92.51' TO 93'
93.01' TO 93.5'
93.51' TO 94'
94.01' TO 94.5'
94.51' TO 95'
95.01' TO 95.5'
95.51' TO 96'
96.01' TO 96.5'
96.51' TO 97'
97.01' TO 97.5'
97.51' TO 98'
98.01' TO 98.5'
98.51' TO 99'
99.01' TO 99.5'
99.51' TO 100'



6.3 INCH - 24 HOUR FLOOD PLAN AND PROFILE STATION 360+00 TO 420+00

DATE: APRIL 2002
 PROJECT No. 10550-010.16.4
 DRAWING No. PP-7

SCALE: 1"=200'
 PROJECT No. 10550010-PP7

Project Manager
R. Brubaker

Designer
S. Rogers

Checker
K. Hodne

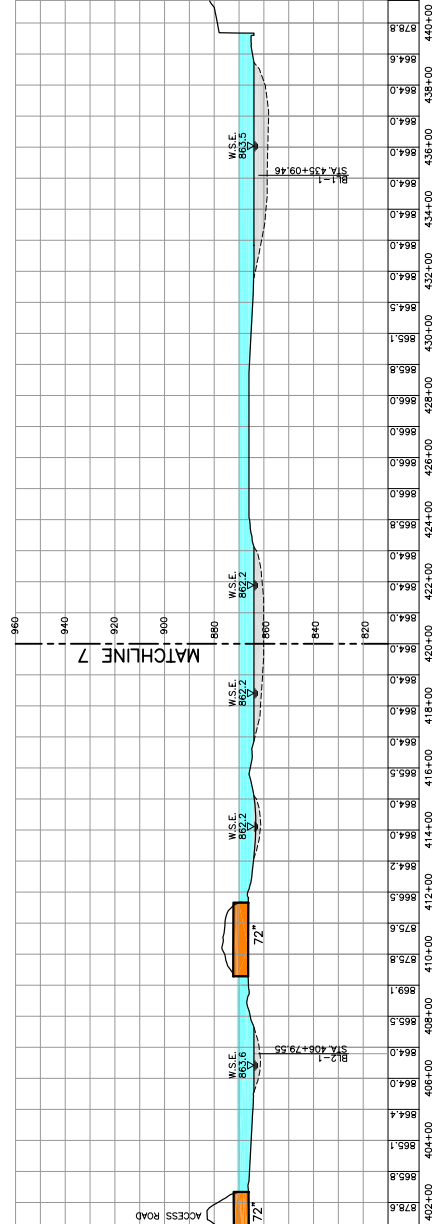
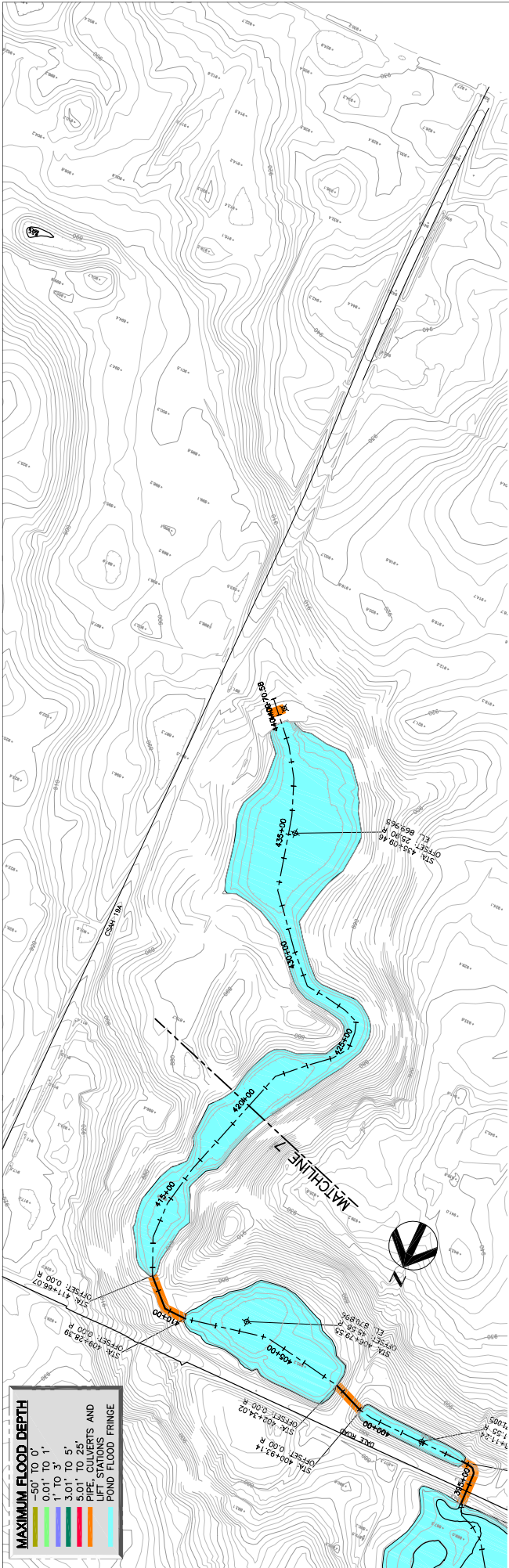
Scale
1"=200'

Sheet
PP-7

HDR
HDR Engineering, Inc.


Southwest District
Washington
D.C.

MAXIMUM FLOOD DEPTH	
	-30' TO 0'
	0.01' TO 1'
	1.01' TO 2'
	3.01' TO 5'
	5.01' TO 25'
	PIPE, CULVERTS AND LIFT STATIONS
	POND FLOOD FRINGE



6.3 INCH - 24 HOUR FLOOD PLAN AND PROFILE STATION 420+00 TO END

DATE	APRIL 2002	PROJECT No.	10550-010.16.4	DRAWING No.	PP-8
SCALE	1"=200'	FILE NAME	10550010-PP8		



HDR Engineering, Inc.
AN ILLINOIS CORPORATION

Project Manager: R. Brecklin
 Designer: [Blank]
 Checker: [Blank]
 Planner: [Blank]
 K. Hodre