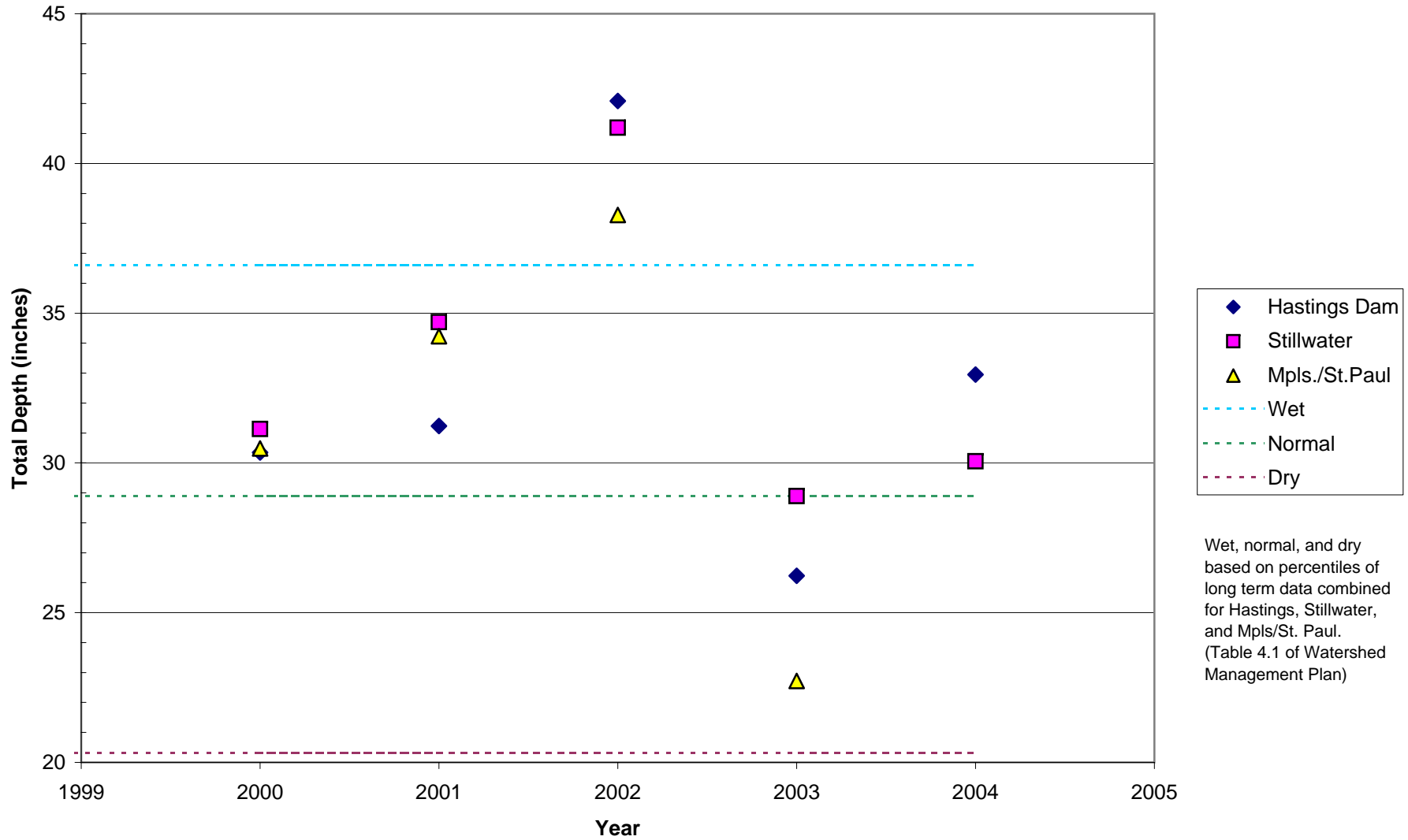
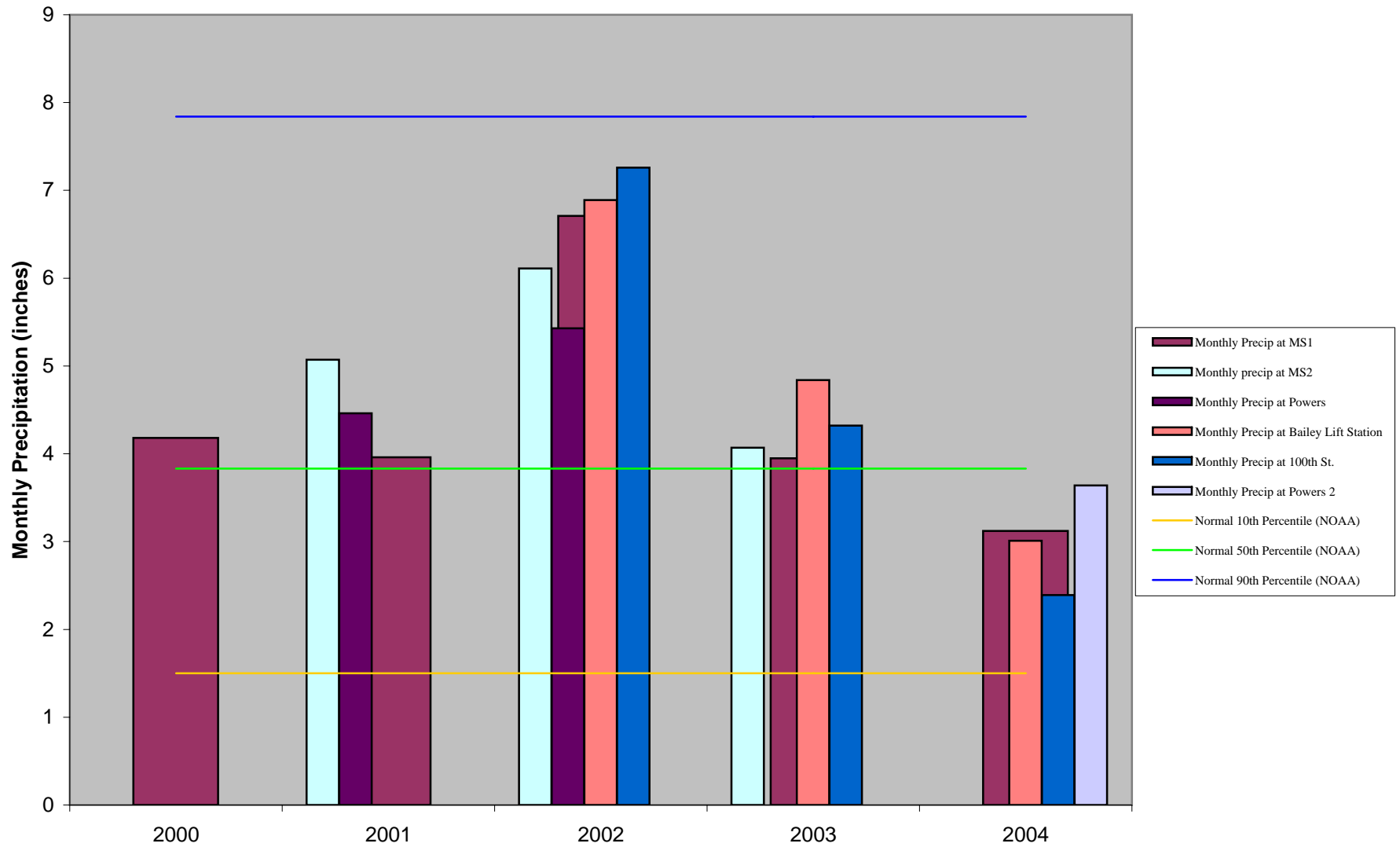


Annual Precipitation

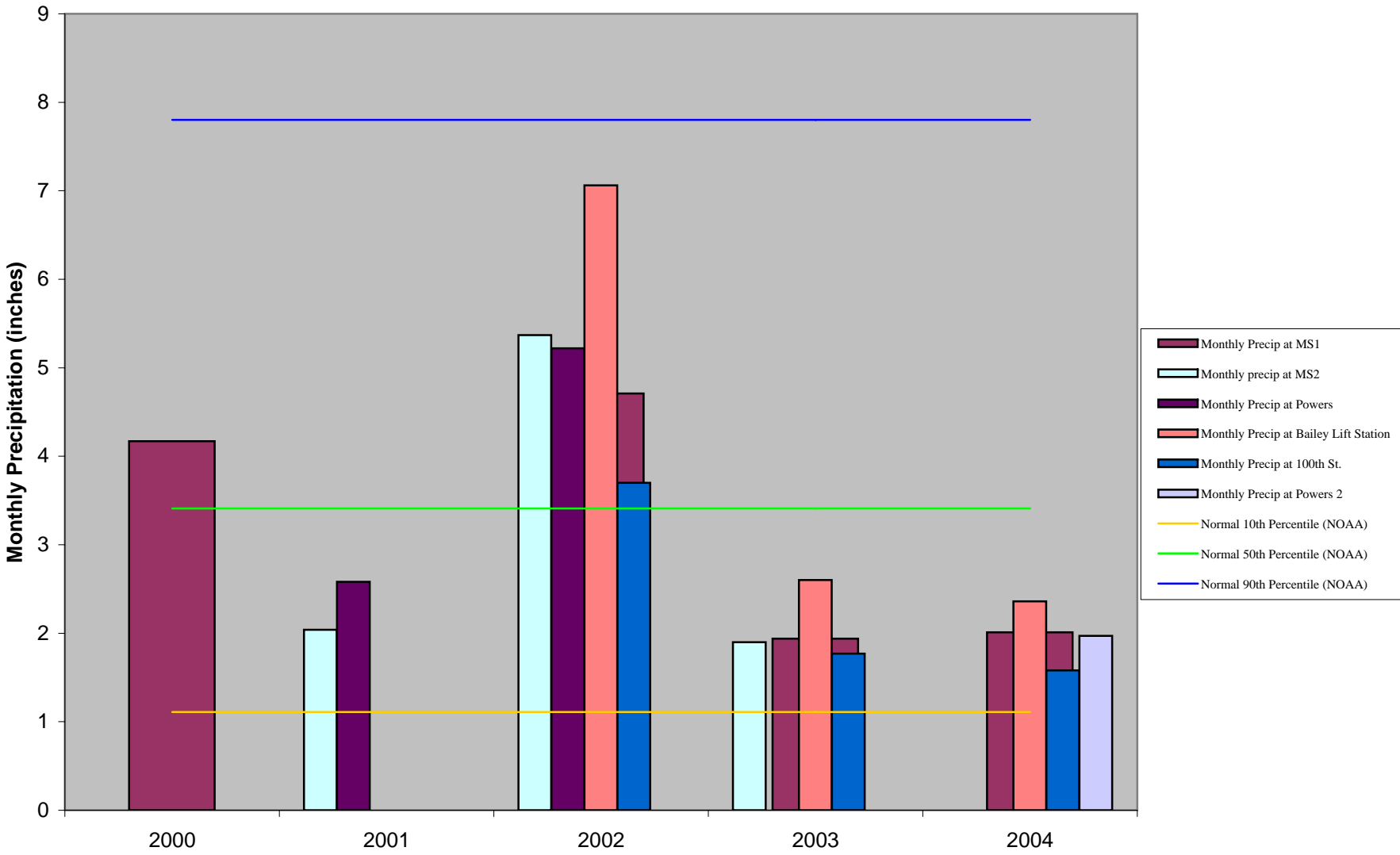


Wet, normal, and dry based on percentiles of long term data combined for Hastings, Stillwater, and Mpls/St. Paul. (Table 4.1 of Watershed Management Plan)

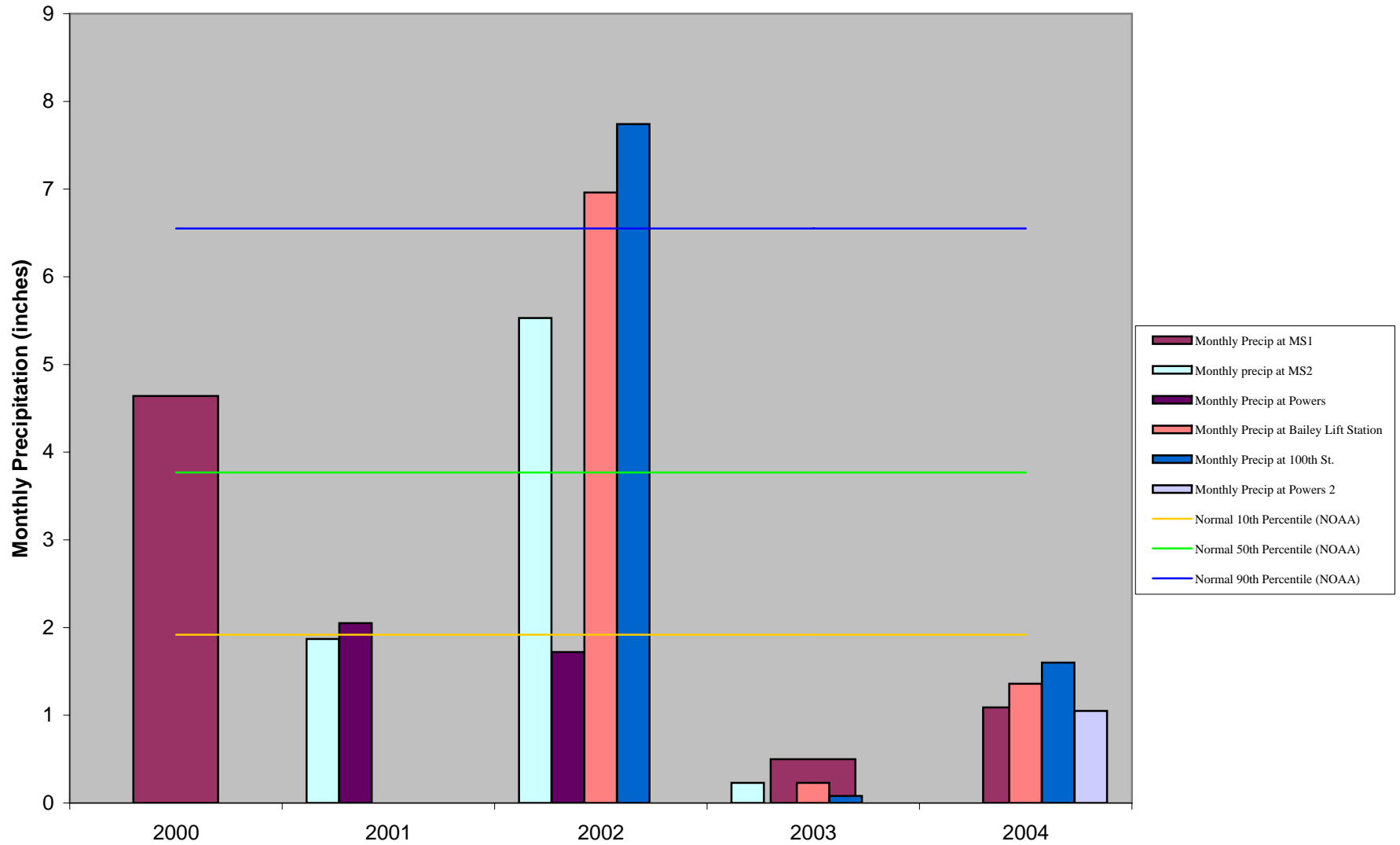
South Washington Watershed District Precipitation Records vs NOAA Normals for June



South Washington Watershed District Precipitation Records vs NOAA Normals for July



South Washington Watershed District Precipitation Records vs NOAA Normals for August



South Washington Watershed District Summary of Annual Rainfall and Runoff Dynamics

	Year	Hydro Period	Total Runoff (Ac-Ft)	Compiled* Total Rainfall (inches)	Runoff Coefficient
Site MS1 Drainage Area 1,482	2000	5/17-10/31	124	19.97	0.05
	2001	3/28-11/6	385	24.17	0.13
	2002	4/12-11/4	462	31.70	0.12
	2003	3/25-10/29	270	20.71	0.11
	2004	3/25-11/3	210	19.60	0.09
Site MS2 Drainage Area 10,174	2000	5/8-10/3	1463	19.97	0.09
	2001	3/8-11/6	694	24.17	0.03
	2002	4/13-11/4	5932	31.70	0.22
	2003	3/20-10/29	1505	20.71	0.09
	2004	3/10-10/4	89	17.98	0.01
Site 100th Drainage Area 7,973	2000		--		
	2001	3/20-11/8	281	24.17	0.02
	2002	4/12-11/5	298	32.50	0.01
	2003	8/28-10/27	--		
	2004	3/25-11/3	36	18.45	0.00

*MS1 and MS2 compiled total rainfall based on MS1 and MS2 data, or where MS1 missing, MS2 and Powers.

*100th Street compiled total rainfall based on 100th and MS2 data, or where 100th missing, MS1 and MS2 or MS2 and Powers.

SWWD Proportion of Runoff for Annual Rainfall Totals

