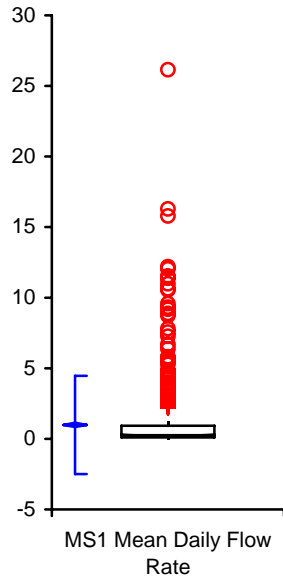


South Washington Watershed District

Variables MS1 Aggregate Mean Daily Flow Rate (>0)

Performed by Houston Engineering, Inc.

Date 2006

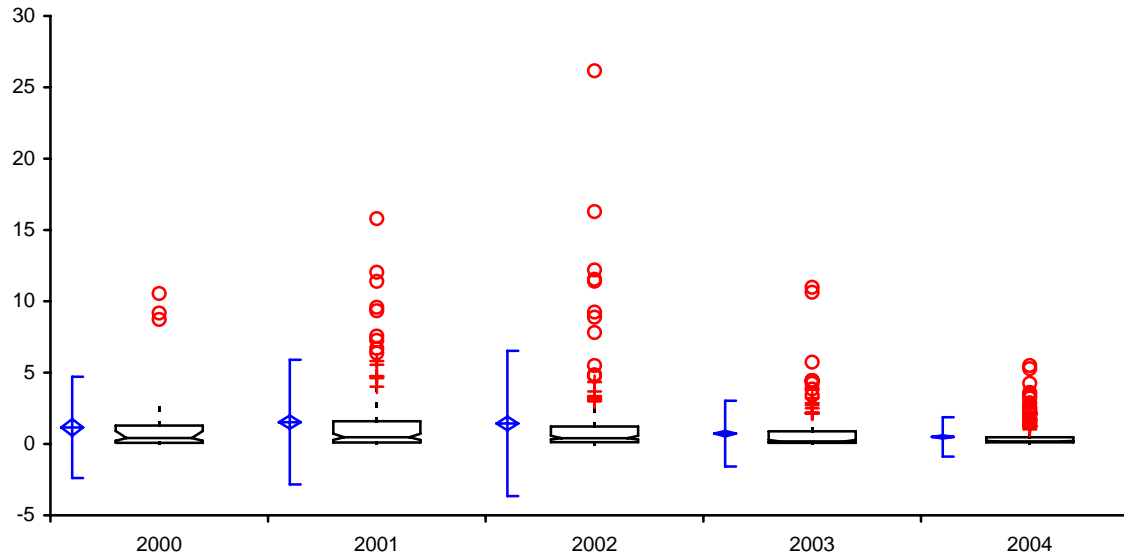


| | n | Mean | SD | SE | 95% CI of Mean | Median | IQR | 95% CI of Median |
|---------------------------------|-----|-------|--------|--------|----------------|--------|-------|------------------|
| MS1 Mean Daily Flow Rate | 743 | 0.985 | 2.1177 | 0.0777 | 0.832 to 1.138 | 0.260 | 0.825 | 0.220 to 0.310 |

South Washington Watershed District

Variables Mean Daily Flow > 0 (cfs) by Date
Performed by Houston Engineering, Inc.

Date 2006



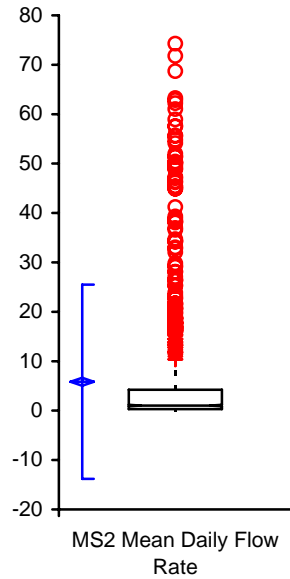
| Daily Flow > 0 (cfs) by Date | n | Mean | SD | SE | 95% CI of Mean | Median | IQR | 95% CI of Median |
|------------------------------|-----|-------|--------|--------|----------------|--------|-------|------------------|
| 2000 | 54 | 1.162 | 2.1566 | 0.2935 | 0.573 to 1.750 | 0.420 | 1.215 | 0.230 to 0.910 |
| 2001 | 127 | 1.530 | 2.6550 | 0.2356 | 1.064 to 1.997 | 0.470 | 1.490 | 0.280 to 0.720 |
| 2002 | 162 | 1.436 | 3.0959 | 0.2432 | 0.956 to 1.917 | 0.410 | 1.093 | 0.310 to 0.570 |
| 2003 | 188 | 0.725 | 1.3998 | 0.1021 | 0.524 to 0.927 | 0.185 | 0.803 | 0.150 to 0.280 |
| 2004 | 212 | 0.498 | 0.8381 | 0.0576 | 0.385 to 0.612 | 0.180 | 0.358 | 0.160 to 0.220 |

South Washington Watershed District

Variables MS2 Aggregate Mean Daily Flow Rate (>0)

Performed by Houston Engineering, Inc.

Date 2006

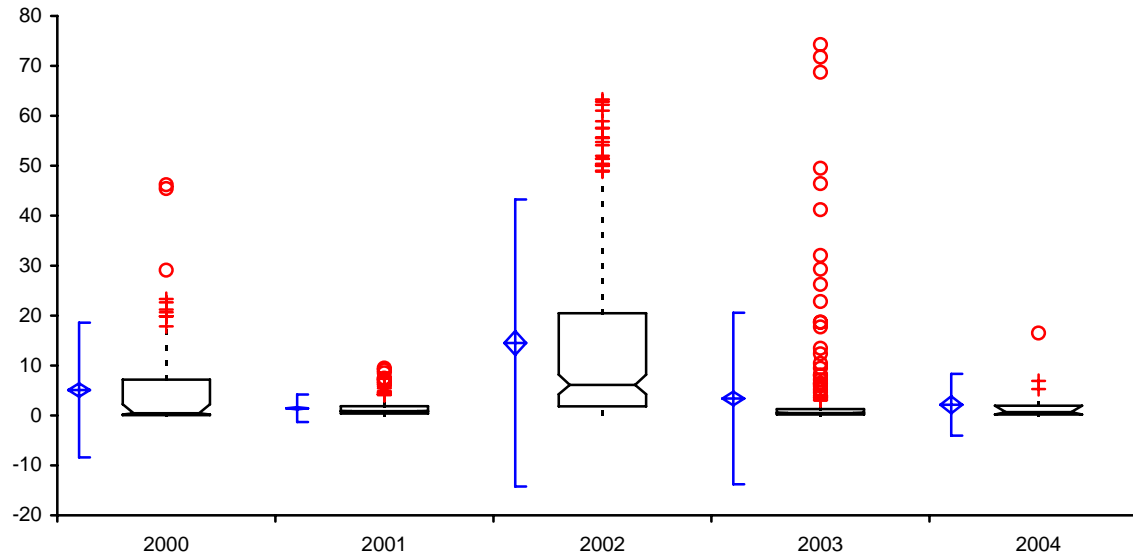


| | n | Mean | SD | SE | 95% CI of Mean | Median | IQR | 95% CI of Median |
|---------------------------------|-----|-------|---------|--------|----------------|--------|-------|------------------|
| MS2 Mean Daily Flow Rate | 837 | 5.832 | 11.9535 | 0.4132 | 5.021 to 6.643 | 1.020 | 3.900 | 0.880 to 1.170 |

South Washington Watershed District

Variables Mean Daily Flow > 0 (cfs) by Date
Performed by Houston Engineering, Inc.

Date 2006



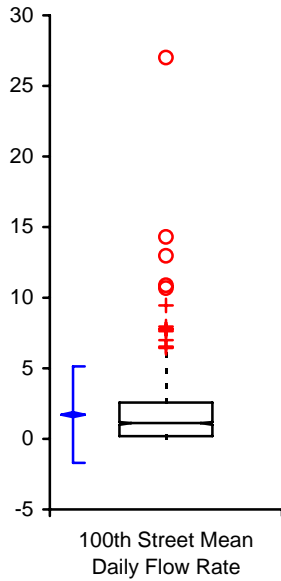
| Daily Flow > 0 (cfs) by Date | n | Mean | SD | SE | 95% CI of Mean | Median | IQR | 95% CI of Median |
|------------------------------|-----|--------|---------|--------|------------------|--------|--------|------------------|
| 2000 | 145 | 5.086 | 8.2085 | 0.6817 | 3.739 to 6.434 | 0.440 | 7.110 | 0.180 to 2.240 |
| 2001 | 244 | 1.434 | 1.6687 | 0.1068 | 1.223 to 1.644 | 0.850 | 1.450 | 0.800 to 0.920 |
| 2002 | 206 | 14.517 | 17.4717 | 1.2173 | 12.117 to 16.917 | 6.110 | 18.648 | 4.260 to 8.170 |
| 2003 | 224 | 3.388 | 10.4492 | 0.6982 | 2.012 to 4.764 | 0.490 | 1.098 | 0.400 to 0.590 |
| 2004 | 21 | 2.129 | 3.7596 | 0.8204 | 0.418 to 3.840 | 0.660 | 1.790 | 0.170 to 1.960 |

South Washington Watershed District

Variables 100th Street Aggregate Mean Daily Flow Rate (>0)

Performed by Houston Engineering, Inc

Date 2006



| | n | Mean | SD | SE | 95% CI of Mean | Median | IQR | 95% CI of Median |
|------------------------------------|-----|-------|--------|--------|----------------|--------|-------|------------------|
| Street Mean Daily Flow Rate | 547 | 1.713 | 2.0777 | 0.0888 | 1.539 to 1.888 | 1.120 | 2.380 | 1.000 to 1.190 |

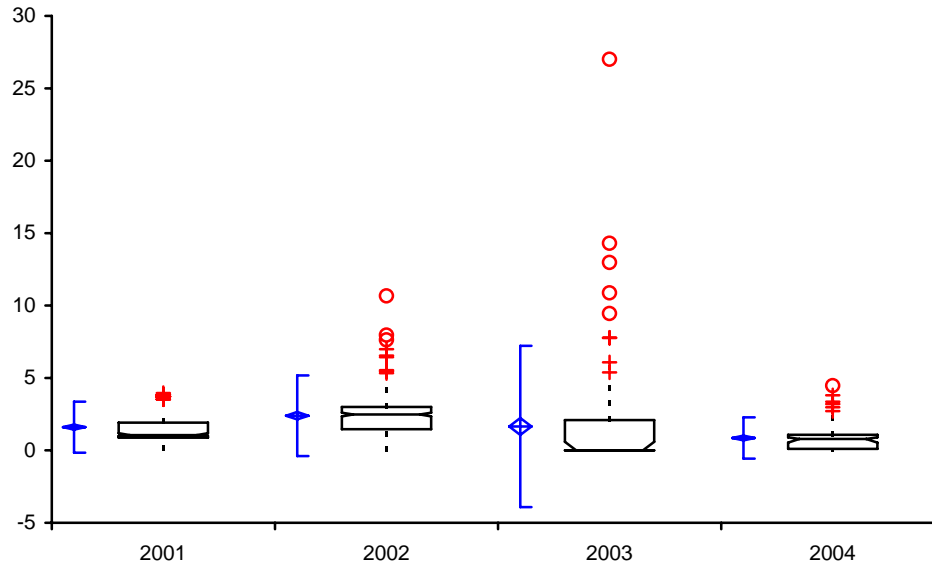
South Washington Watershed District

Variables 100th Street Mean Daily Flow > 0 (cfs) by Date

Performed by Houston Engineering, Inc

Date

2006

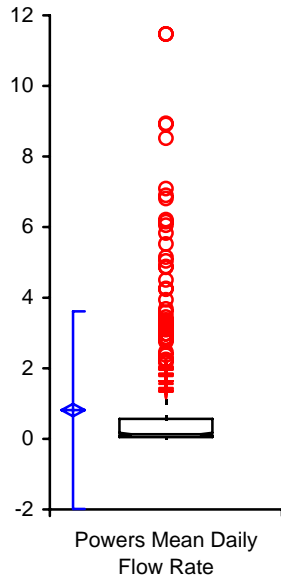


| Daily Flow > 0 (cfs) by Date | n | Mean | SD | SE | 95% CI of Mean | Median | IQR | 95% CI of Median |
|------------------------------|-----|-------|--------|--------|----------------|--------|-------|------------------|
| 2001 | 142 | 1.602 | 1.0685 | 0.0897 | 1.424 to 1.779 | 1.050 | 1.040 | 1.000 to 1.190 |
| 2002 | 169 | 2.394 | 1.6939 | 0.1303 | 2.136 to 2.651 | 2.480 | 1.540 | 2.350 to 2.600 |
| 2003 | 130 | 1.651 | 3.3830 | 0.2967 | 1.064 to 2.238 | 0.010 | 2.078 | 0.010 to 0.590 |
| 2004 | 106 | 0.855 | 0.8679 | 0.0843 | 0.688 to 1.022 | 0.790 | 0.978 | 0.530 to 0.900 |

South Washington Watershed District

Variables Powers Aggregate Mean Daily Flow Rate (>0)
Performed by Houston Engineering, Inc.

Date 2006

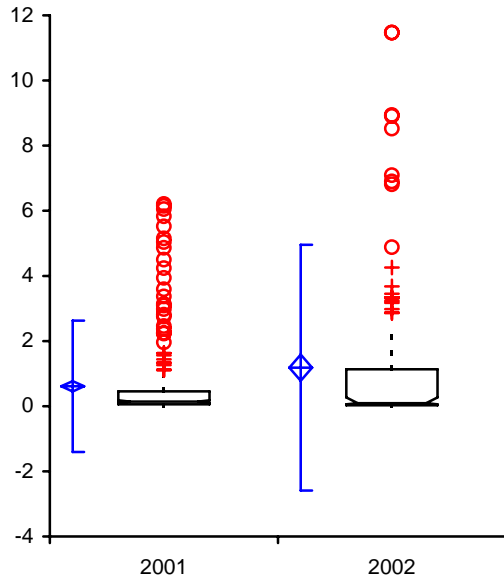


| | n | Mean | SD | SE | 95% CI of Mean | Median | IQR | 95% CI of Median |
|----------------------------|-----|-------|--------|--------|----------------|--------|-------|------------------|
| owers Mean Daily Flow Rate | 359 | 0.814 | 1.7012 | 0.0898 | 0.637 to 0.990 | 0.130 | 0.515 | 0.100 to 0.170 |

South Washington Watershed District

Variables Powers Mean Daily Flow (>0) by Date
Performed by Houston Engineering, Inc.

Date 2006

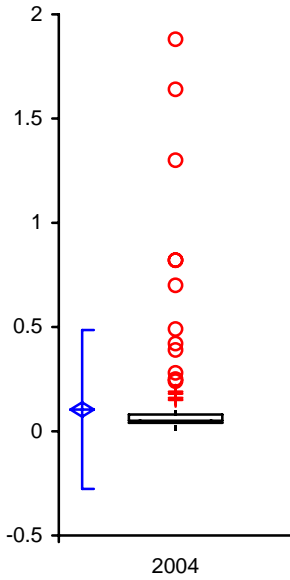


| Mean Daily Flow (>0) by Date | n | Mean | SD | SE | 95% CI of Mean | Median | IQR | 95% CI of Median |
|------------------------------|-----|-------|--------|--------|----------------|--------|-------|------------------|
| 2001 | 232 | 0.611 | 1.2256 | 0.0805 | 0.453 to 0.770 | 0.140 | 0.398 | 0.110 to 0.180 |
| 2002 | 127 | 1.183 | 2.2925 | 0.2034 | 0.781 to 1.586 | 0.090 | 1.105 | 0.060 to 0.270 |

South Washington Watershed District

Variables Powers (2) Mean Daily Flow Rate (> 0) by Date
Performed by Houston Engineering, Inc.

Date 2006



| Daily Flow Rate (> 0) by Date | n | Mean | SD | SE | 95% CI of Mean | Median | IQR | 95% CI of Median |
|-------------------------------|-----|-------|--------|--------|----------------|--------|-------|------------------|
| 2004 | 174 | 0.104 | 0.2318 | 0.0176 | 0.070 to 0.139 | 0.050 | 0.040 | 0.040 to 0.050 |